

1 A lorry of mass 16 000 kg is travelling along a straight horizontal road. The engine of the lorry is working at constant power. The work done by the driving force in 10 s is 750 000 J.

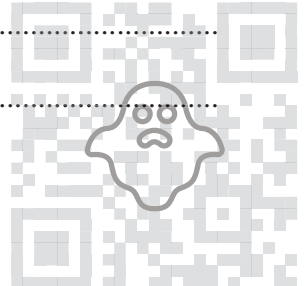
(a) Find the power of the lorry's engine. [1]

.....
.....
.....
.....
.....

(b) There is a constant resistance force acting on the lorry of magnitude 2400 N.

Find the acceleration of the lorry at an instant when its speed is 25 m s^{-1} . [3]

.....
.....
.....
.....
.....
.....
.....
.....
.....
.....
.....
.....
.....
.....
.....
.....
.....
.....
.....
.....



2 A particle P of mass 0.4 kg is on a rough horizontal floor. The coefficient of friction between P and the floor is μ . A force of magnitude 3 N is applied to P upwards at an angle α above the horizontal, where $\tan \alpha = \frac{3}{4}$. The particle is initially at rest and accelerates at 2 m s^{-2} .

(a) Find the time it takes for P to travel a distance of 1.44 m from its starting point. [2]

.....

.....

.....

.....

.....

.....

.....

.....

.....

.....

(b) Find μ . [4]

.....

.....

.....

.....

.....

.....

.....

.....

.....

.....

.....

.....

.....

.....

.....

.....

.....

.....

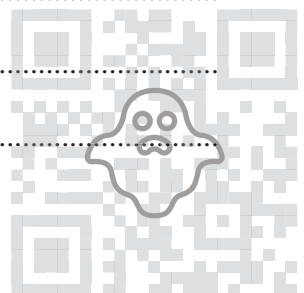
.....

.....

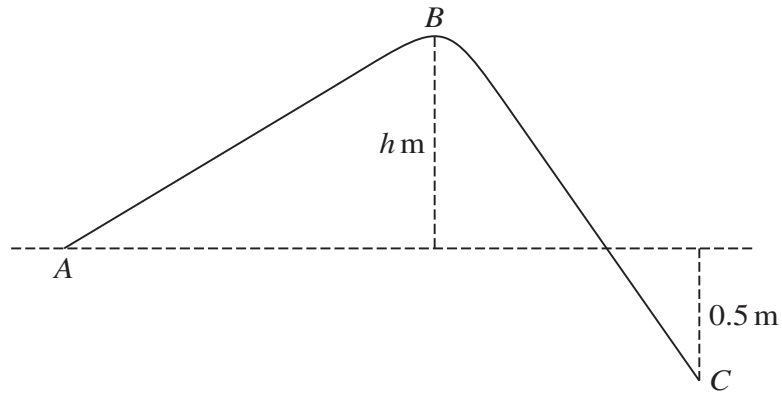
.....

.....

.....



3



The diagram shows the vertical cross-section of a surface. A , B and C are three points on the cross-section. The level of B is h m above the level of A . The level of C is 0.5 m below the level of A . A particle of mass 0.2 kg is projected up the slope from A with initial speed 5 m s^{-1} . The particle remains in contact with the surface as it travels from A to C .

- (a) Given that the particle reaches B with a speed of 3 m s^{-1} and that there is no resistance force, find h . [3]

.....

.....

.....

.....

.....

.....

.....

.....

.....

.....

.....

.....

.....

.....

.....

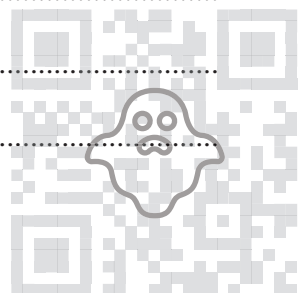
.....

.....

.....

.....

.....



.....

.....

.....

.....

.....

.....

.....

.....

(b) Find AC. [2]

.....

.....

.....

.....

.....

.....

.....

.....

.....

.....

.....

.....

.....

.....

.....

.....

.....

.....

.....

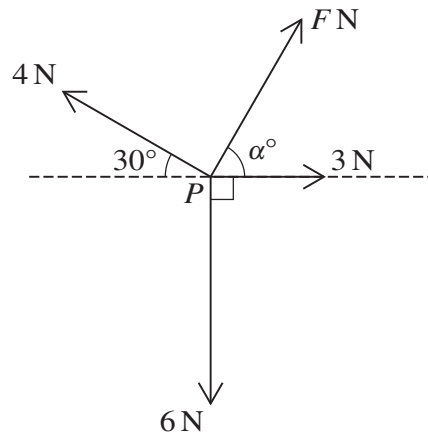
.....

.....

.....



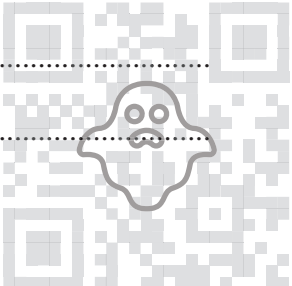
5



Coplanar forces, of magnitudes F N, 3 N, 6 N and 4 N, act at a point P , as shown in the diagram.

- (a) Given that $\alpha = 60$, and that the resultant of the four forces is in the direction of the 3 N force, find F . [3]

.....
.....
.....
.....
.....
.....
.....
.....
.....
.....
.....
.....
.....
.....
.....
.....
.....
.....
.....
.....
.....
.....



(b) Given instead that the four forces are in equilibrium, find the values of F and α . [5]

.....

.....

.....

.....

.....

.....

.....

.....

.....

.....

.....

.....

.....

.....

.....

.....

.....

.....

.....

.....

.....

.....

.....

.....

.....



6 On a straight horizontal test track, driverless vehicles (with no passengers) are being tested. A car of mass 1600 kg is towing a trailer of mass 700 kg along the track. The brakes are applied, resulting in a deceleration of 12 m s^{-2} . The braking force acts on the car only. In addition to the braking force there are constant resistance forces of 600 N on the car and of 200 N on the trailer.

(a) Find the magnitude of the force in the tow-bar. [2]

.....

.....

.....

.....

.....

.....

.....

.....

.....

.....

.....

.....

.....

.....

.....

.....

.....

.....

.....

.....

.....

.....

(b) Find the braking force. [2]

.....

.....

.....

.....

.....

.....

.....

.....

.....

.....

.....

.....

.....

.....

.....

.....

.....

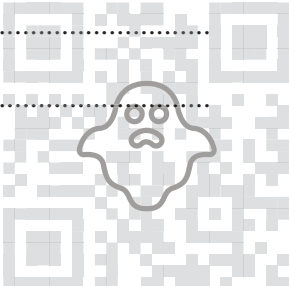
.....

.....

.....

.....

.....



- (c) At the instant when the brakes are applied, the car has speed 22 m s^{-1} . At this instant the car is 17.5 m away from a stationary van, which is directly in front of the car.

Show that the car hits the van at a speed of 8 m s^{-1} . [2]

.....

.....

.....

.....

.....

.....

.....

.....

.....

.....

.....

.....

.....

.....

.....

.....

.....

.....

.....

.....

.....

- (d) After the collision, the van starts to move with speed 5 m s^{-1} and the car and trailer continue moving in the same direction with speed 2 m s^{-1} .

Find the mass of the van. [3]

.....

.....

.....

.....

.....

.....

.....

.....

.....

.....

.....

.....

.....

.....

.....

.....

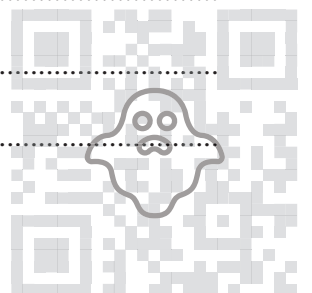
.....

.....

.....

.....

.....



- 7 A particle moves in a straight line through the point O . The displacement of the particle from O at time t s is s m, where

$$s = t^2 - 3t + 2 \quad \text{for } 0 \leq t \leq 6,$$

$$s = \frac{24}{t} - \frac{t^2}{4} + 25 \quad \text{for } t \geq 6.$$

- (a) Find the value of t when the particle is instantaneously at rest during the first 6 seconds of its motion. [2]

.....

.....

.....

.....

.....

.....

.....

.....

At $t = 6$, the particle hits a barrier at a point P and rebounds.

- (b) Find the velocity with which the particle arrives at P and also the velocity with which the particle leaves P . [3]

.....

.....

.....

.....

.....

.....

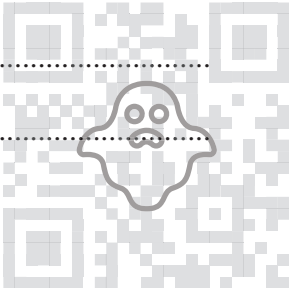
.....

.....

.....

.....

.....



(c) Find the total distance travelled by the particle in the first 10 seconds of its motion. [5]

.....
.....
.....
.....
.....
.....
.....
.....
.....
.....
.....
.....
.....
.....
.....
.....
.....
.....
.....
.....
.....
.....
.....
.....
.....
.....
.....
.....
.....
.....
.....
.....
.....
.....
.....
.....
.....
.....
.....
.....
.....
.....

