

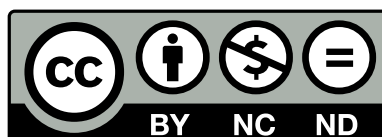
Numeracy Practice

Sample Pack

@casperyc

Last updated: April 22, 2020

Version 2.1



From the author

数学 Mathematics. The first character 数 means number, or “count/counting” in some cases. It is the study of Numbers. To be good at Mathematics, having good numeracy is of great importance.

This numeracy sample pack contains various sheets for different practice on number operations. All sheets come with answers (see [A6,D7](#) and [F10](#) for example) including [C5](#) (Chinese version of times table, see [APP1](#)). These are designed for A3 booklet printing (with center staple and fold), so that pupils can fold it in half while practicing and then open the booklet to check answers on the next page. Of course if you prefer, you can have separate booklets for questions and answers.

Some sheets have options for different styles of questions. The majority come with an expression (or sum 算式) like in [A2](#), [B3](#), [C1](#) and [D4](#). Others may have the option fill in the blanks (填空) available as in [B6b](#), [C4](#) and [C7](#).

The `maxval` option indicates where a *maximum* value of the operation can be set. For example in [D9](#), we can set the *maximum* value of the quotient of the division, as well as the terms in the addition and subtraction. Also for questions where brackets are used, see [F4](#), there maybe a `maxval` to limit the *maximum* value inside the brackets. However, `maxval` is mainly intended for addition and subtraction practice in section A and D.

If you see a sheet you like, just tell me the code, I will produce full packs with specific settings of your choice. Feel free to share, free to use. Lots more on [TES](#), click on links below.

Sample Pack

Set A - Addition 加 & Subtraction 减

Set B - Multiplication 乘 & Division 除

Set C - [C1](#) & [C2](#) / [C3](#) & [C4](#) / [C5](#) / [C6](#) & [C7](#) / [C8](#) & [C9](#) & [C10](#) & [C11](#) & [C12](#)

Set D - Addition 加 & Subtraction 减 with Number Bounds

Set E - Addition 加 & Subtraction 减 with Brackets

Set F - BIDMAS Practice - Mix It All

Addition 加 & Subtraction 减

A1	不进位加法	addition that does not carry over
A2	不退位减法	subtraction that does not borrow
A3	进位加法	addition that carries over
A4	退位减法	subtraction that borrows
A5	不进退位组合	mixture of A1 and A2
A6	进退位组合	mixture of A3 and A4
A7	进位加不退位减	mixture of A3 and A2
A8	任意混合	any mixture of the above

Multiplication 乘 & Division 除

B1	乘法	Multiplication
B2	除法	Division
B3	乘除混合	Multiplication and Division
B4	乘混加减	Multiplication with Addition and Subtraction
B5	除混加减	Division with Addition and Subtraction
B6a	加减乘除 (算式)	Addition or Subtraction or Multiplication or Division (sums)
B6b	加减乘除 (填空)	Addition or Subtraction or Multiplication or Division (fill in the blanks)
B7	加减混合	Addition and Subtraction

Multiplication 乘 & Division 除 (Advanced)

C1	九九乘法表 (算式)	times table up to 9 (sums)
C2	英文乘法表 (算式)	times table up to 12 (sums)
C3	九九乘法表 (填空)	times table up to 9 (fill in the blanks)
C4	英文乘法表 (填空)	times table up to 12 (fill in the blanks)
C5	九九乘法表 (中文口诀)	times table (Chinese version)
C6	余数练习	division with remainder (up to 9 times table)
C7	余数练习	division with remainder (up to 12 times table)
C8	连乘	multiplication after multiplication ($\text{maxval} \times \text{maxval} \times \text{maxval}$)
C9	连除	division after division ($\text{maxval} \div \text{maxval} \div \text{maxval}$)
C10	乘连(and) 除	one multiplication and one division
C11	连乘或(or) 连除	(multiplication after multiplication) OR (division after division)
C12	乘除混合(mixture)题	any mixture of multiplication and division

Addition 加 & Subtraction 减 (with Number Bounds 凑整)

D1	连加-后凑整	Addition only, number bounds in last two terms
D2	连加减-后减凑整	Addition then subtraction, number bounds in last two terms
D3	连加-随机凑整	Addition only, random number bounds
D4	连加减-随机凑整	Addition then subtraction, random number bounds
D5	后凑整组合	Grouping the last two terms (number bounds)
D6	随机凑整组合	Random number bounds
D7	随机连加	Random addition only
D8	随机连减	Random subtraction only
D9	随机连加减	Random addition and subtraction

Addition 加 & Subtraction 减 (with Brackets 括号)

E1	随机连加减	Random addition and subtraction
E2	减连括号	Subtraction with brackets
E3	连加减混合括号	Random addition and subtraction with brackets

BIDMAS 四则运算

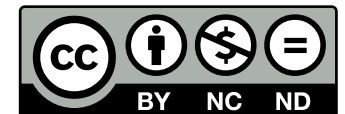
F1	乘法连加法	乘除在前	无括号	Multiplication then addition (no brackets)
F2	乘法连加法	乘除在前	有括号	Multiplication then addition (with brackets)
F3	乘法连加法	加减在前	无括号	Addition then multiplication (no brackets)
F4	乘法连加法	加减在前	有括号	Addition then multiplication (with brackets)
F5	乘法连减法	加减在前	无括号	Subtraction then multiplication (no brackets)
F6	乘法连减法	加减在前	随机括号	Subtraction then multiplication (random brackets)
F7	乘法连加减	加减在前	无括号	Addition/Subtraction then multiplication (no brackets)
F8	乘法连加减	加减在前	随机括号	Addition/Subtraction then multiplication (random brackets)
F9	乘法连加减	随机顺序	随机括号	Addition/Subtraction and multiplication (random brackets, random order)
F10	四则运算			BIDMAS

第一章 Addition 加 & Subtraction 减

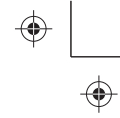
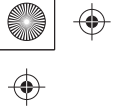
This Chapter focuses on basic addition and subtraction skills.

A1	不进位加法	addition that does not carry over
A2	不退位减法	subtraction that does not borrow
A3	进位加法	addition that carries over
A4	退位减法	subtraction that borrows
A5	不进退位组合	mixture of A1 and A2
A6	进退位组合	mixture of A3 and A4
A7	进位加不退位减	mixture of A3 and A2
A8	任意混合	any mixture of the above

This work is licensed under a [Creative Commons](#) “Attribution-NonCommercial-NoDerivatives 4.0 International” license.



A.pdf 19 2018/8/21 21:50:38



A1 - Mental Arithmetic within 100-不进位加法-填空

1. $62 + () = 78$

2. $() + 10 = 44$

3. $() + 1 = 77$

4. $27 + () = 89$

5. $() + 43 = 78$

6. $12 + () = 19$

7. $() + 68 = 79$

8. $() + 1 = 87$

9. $() + 22 = 59$

10. $() + 35 = 79$

11. $() + 7 = 98$

12. $0 + () = 91$

13. $16 + () = 77$

14. $93 + () = 94$

15. $60 + () = 89$

16. $() + 21 = 34$

17. $52 + () = 68$

18. $51 + () = 53$

19. $() + 14 = 78$

20. $() + 0 = 82$

21. $3 + () = 68$

22. $() + 6 = 76$

23. $() + 32 = 53$

24. $0 + () = 8$

25. $3 + () = 3$

26. $15 + () = 86$

27. $48 + () = 99$

28. $() + 15 = 96$

29. $1 + () = 82$

30. $() + 66 = 78$

31. $() + 42 = 49$

32. $() + 41 = 92$

33. $() + 12 = 23$

34. $66 + () = 97$

35. $() + 22 = 97$

36. $() + 1 = 92$

37. $() + 62 = 98$

38. $83 + () = 98$

39. $33 + () = 56$

40. $12 + () = 19$

41. $2 + () = 24$

42. $21 + () = 29$

43. $3 + () = 86$

44. $() + 4 = 95$

45. $() + 55 = 69$

46. $() + 8 = 99$

47. $71 + () = 81$

48. $80 + () = 97$

49. $41 + () = 98$

50. $() + 19 = 89$

51. $() + 32 = 72$

52. $33 + () = 74$

53. $() + 11 = 98$

54. $58 + () = 78$

55. $() + 4 = 69$

56. $30 + () = 99$

57. $() + 10 = 46$

58. $72 + () = 84$

59. $() + 11 = 98$

60. $55 + () = 78$

61. $85 + () = 87$

62. $36 + () = 38$

63. $() + 34 = 36$

64. $() + 18 = 49$

65. $25 + () = 69$

66. $23 + () = 69$

67. $() + 20 = 38$

68. $() + 5 = 15$

69. $28 + () = 89$

70. $38 + () = 49$

71. $() + 86 = 89$

72. $31 + () = 58$

73. $65 + () = 87$

74. $4 + () = 98$

75. $() + 98 = 99$

76. $() + 53 = 59$

77. $() + 93 = 98$

78. $() + 72 = 99$

79. $46 + () = 89$

80. $() + 50 = 51$

81. $1 + () = 37$

82. $() + 67 = 87$

83. $73 + () = 96$

84. $() + 85 = 88$

85. $() + 53 = 84$

86. $1 + () = 59$

87. $24 + () = 55$

88. $() + 3 = 99$

89. $38 + () = 49$

90. $() + 25 = 37$

91. $() + 2 = 95$

92. $35 + () = 39$

93. $() + 67 = 88$

94. $() + 28 = 59$

95. $() + 97 = 97$

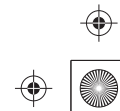
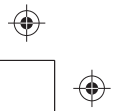
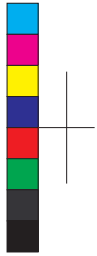
96. $() + 33 = 88$

97. $() + 31 = 77$

98. $() + 4 = 87$

99. $() + 36 = 36$

100. $41 + () = 82$



A1

A2

A3

A4

A5

A6

A7

A8

NAV

B

C

D

E

F

A2 - Mental Arithmetic within 300-不退位减法-算式

1 . 65-15=	21 . 113-42=	41 . 147-97=	61 . 124-63=	81 . 51-11=	A1
2 . 65-33=	22 . 86-52=	42 . 187-47=	62 . 28-15=	82 . 259-143=	A2
3 . 288-168=	23 . 85-25=	43 . 168-137=	63 . 115-90=	83 . 273-192=	A3
4 . 291-131=	24 . 292-201=	44 . 135-132=	64 . 129-21=	84 . 147-15=	A4
5 . 28-26=	25 . 171-130=	45 . 147-21=	65 . 78-61=	85 . 253-51=	A5
6 . 226-202=	26 . 152-150=	46 . 265-123=	66 . 164-71=	86 . 144-82=	A6
7 . 42-21=	27 . 175-42=	47 . 134-73=	67 . 271-101=	87 . 227-205=	A7
8 . 89-34=	28 . 76-73=	48 . 276-182=	68 . 138-63=	88 . 229-84=	A8
9 . 83-41=	29 . 15-11=	49 . 52-41=	69 . 273-142=	89 . 182-11=	NAV
10 . 217-134=	30 . 95-31=	50 . 24-10=	70 . 298-244=	90 . 261-141=	B
11 . 193-42=	31 . 196-94=	51 . 61-10=	71 . 194-121=	91 . 213-141=	C
12 . 207-97=	32 . 231-131=	52 . 33-13=	72 . 105-84=	92 . 177-44=	D
13 . 126-95=	33 . 214-73=	53 . 249-57=	73 . 151-110=	93 . 83-61=	E
14 . 273-203=	34 . 117-114=	54 . 235-15=	74 . 231-181=	94 . 166-41=	F
15 . 201-100=	35 . 216-115=	55 . 83-51=	75 . 262-261=	95 . 259-230=	
16 . 298-264=	36 . 291-11=	56 . 285-203=	76 . 42-21=	96 . 152-141=	
17 . 105-75=	37 . 56-45=	57 . 255-3=	77 . 196-51=	97 . 22-1=	
18 . 263-190=	38 . 182-70=	58 . 135-95=	78 . 184-160=	98 . 44-14=	
19 . 171-1=	39 . 191-170=	59 . 135-84=	79 . 286-203=	99 . 257-152=	
20 . 182-121=	40 . 27-15=	60 . 213-62=	80 . 134-93=	100 . 191-40=	

A3 – Mental Arithmetic within 500-进位加法-混合题型

- | | | | | |
|------------------|------------------|------------------|------------------|------------------|
| 1 . 18+272= | 21 . 131+29= | 41 . 266+()=334 | 61 . 311+()=420 | 81 . 138+332= |
| 2 . 311+()=340 | 22 . 413+()=481 | 42 . ()+159=332 | 62 . 85+256= | 82 . 209+188= |
| 3 . 54+()=110 | 23 . 298+169= | 43 . ()+88=291 | 63 . 312+()=410 | 83 . ()+337=492 |
| 4 . 219+()=310 | 24 . 39+318= | 44 . 371+()=430 | 64 . 435+37= | 84 . 176+149= |
| 5 . 86+399= | 25 . 79+()=441 | 45 . 208+64= | 65 . 482+9= | 85 . 38+()=371 |
| 6 . ()+3=410 | 26 . 448+19= | 46 . ()+49=91 | 66 . 199+258= | 86 . 42+269= |
| 7 . 175+()=281 | 27 . ()+158=425 | 47 . 157+()=391 | 67 . 274+158= | 87 . ()+159=350 |
| 8 . 175+75= | 28 . ()+18=274 | 48 . 307+()=430 | 68 . 29+255= | 88 . 29+()=491 |
| 9 . ()+246=292 | 29 . 15+()=470 | 49 . 8+223= | 69 . 126+216= | 89 . ()+37=421 |
| 10 . ()+456=484 | 30 . 247+196= | 50 . 78+()=471 | 70 . 74+347= | 90 . 249+44= |
| 11 . 177+275= | 31 . 211+()=390 | 51 . 425+()=452 | 71 . 78+362= | 91 . 228+148= |
| 12 . 234+()=340 | 32 . 213+68= | 52 . ()+12=140 | 72 . ()+37=496 | 92 . 208+()=493 |
| 13 . 123+()=131 | 33 . 214+196= | 53 . 277+104= | 73 . 197+113= | 93 . ()+452=480 |
| 14 . 202+279= | 34 . 7+488= | 54 . 39+451= | 74 . 177+173= | 94 . ()+272=471 |
| 15 . 386+104= | 35 . 28+402= | 55 . 485+()=491 | 75 . 459+()=466 | 95 . 262+()=430 |
| 16 . 214+()=340 | 36 . ()+376=425 | 56 . 266+()=482 | 76 . 9+()=490 | 96 . 369+()=493 |
| 17 . 9+()=490 | 37 . 152+()=211 | 57 . ()+452=491 | 77 . ()+27=463 | 97 . 297+9= |
| 18 . 77+()=360 | 38 . 371+69= | 58 . 92+29= | 78 . 219+16= | 98 . 215+95= |
| 19 . 107+329= | 39 . 154+178= | 59 . ()+95=480 | 79 . ()+89=231 | 99 . 306+129= |
| 20 . 96+()=165 | 40 . 366+38= | 60 . 4+379= | 80 . 83+()=321 | 100 . 81+259= |

A1

A2

A3

A4

A5

A6

A7

A8

NAV

B

C

D

E

F

A4 - Mental Arithmetic within 1000-退位减法-混合题型

1 . 46-()=18	21 . 44-()=26	41 . ()-53=129	61 . 995-()=939	81 . ()-199=286	A1
2 . 367-()=79	22 . 242-()=145	42 . 872-744=	62 . ()-488=134	82 . 555-306=	A2
3 . 313-274=	23 . ()-408=459	43 . 295-58=	63 . ()-8=15	83 . 691-18=	A3
4 . 851-78=	24 . ()-127=38	44 . 845-6=	64 . 926-()=268	84 . 882-59=	A4
5 . 65-()=36	25 . 295-89=	45 . 528-369=	65 . 492-69=	85 . 586-39=	A5
6 . 423-394=	26 . 576-()=517	46 . 25-()=19	66 . 328-()=69	86 . 821-()=447	A6
7 . 801-502=	27 . 505-()=178	47 . 407-309=	67 . 441-177=	87 . 531-419=	A7
8 . ()-187=68	28 . 262-119=	48 . 402-244=	68 . 261-232=	88 . ()-57=8	A8
9 . 588-169=	29 . 95-()=37	49 . 462-76=	69 . 427-()=88	89 . ()-57=199	NAV
10 . 397-259=	30 . 326-()=208	50 . 98-()=9	70 . 932-648=	90 . 468-99=	B
11 . 91-74=	31 . ()-119=168	51 . 285-66=	71 . 525-407=	91 . ()-9=19	C
12 . 864-645=	32 . 66-9=	52 . ()-929=18	72 . 313-244=	92 . 91-77=	D
13 . 113-()=6	33 . 613-()=4	53 . 151-33=	73 . ()-367=327	93 . 274-()=258	E
14 . 764-227=	34 . 625-86=	54 . 463-()=114	74 . 332-58=	94 . 94-38=	F
15 . ()-147=465	35 . 191-144=	55 . 964-47=	75 . 162-()=68	95 . 833-366=	
16 . 972-()=573	36 . 633-()=158	56 . ()-397=389	76 . ()-426=515	96 . 252-()=57	
17 . 492-275=	37 . 323-8=	57 . 372-53=	77 . ()-124=17	97 . 497-()=439	
18 . 856-588=	38 . 333-()=195	58 . 152-34=	78 . 675-407=	98 . 643-409=	
19 . 381-154=	39 . 226-157=	59 . 764-656=	79 . 482-()=316	99 . ()-49=33	
20 . 184-136=	40 . 137-129=	60 . ()-19=269	80 . ()-537=247	100 . 53-25=	

A5 - Mental Arithmetic within 300-不进退位组合-算式

1 . 139+80=	21 . 101-11=	41 . 89+200=	61 . 176-102=	81 . 93-81=	A1
2 . 282-190=	22 . 142-21=	42 . 77-32=	62 . 5+274=	82 . 45+241=	A2
3 . 226-23=	23 . 226-134=	43 . 144+112=	63 . 208+21=	83 . 149-122=	A3
4 . 173+30=	24 . 55+113=	44 . 296+2=	64 . 119+0=	84 . 45-24=	A4
5 . 135+54=	25 . 124-81=	45 . 278-148=	65 . 245+44=	85 . 83+133=	A5
6 . 103-42=	26 . 74-52=	46 . 65+84=	66 . 226-171=	86 . 72-50=	A6
7 . 93-71=	27 . 88+200=	47 . 63-42=	67 . 151+6=	87 . 241+31=	A7
8 . 51-11=	28 . 12+285=	48 . 205+74=	68 . 257-205=	88 . 12+285=	A8
9 . 251-251=	29 . 40+236=	49 . 71+16=	69 . 13+205=	89 . 62+236=	NAV
10 . 30+269=	30 . 31+207=	50 . 155-113=	70 . 122+3=	90 . 15-15=	B
11 . 19+140=	31 . 34+223=	51 . 4+232=	71 . 193-190=	91 . 144-80=	C
12 . 289-61=	32 . 124-63=	52 . 175+63=	72 . 101-61=	92 . 171+118=	D
13 . 267-66=	33 . 157-67=	53 . 15+44=	73 . 216-32=	93 . 3+126=	E
14 . 52-41=	34 . 177+51=	54 . 29-18=	74 . 67-55=	94 . 113-53=	F
15 . 264+12=	35 . 165+53=	55 . 0+145=	75 . 118-101=	95 . 214+12=	
16 . 224-141=	36 . 7+171=	56 . 252-161=	76 . 89-82=	96 . 96-14=	
17 . 22+196=	37 . 68-65=	57 . 127-122=	77 . 194-54=	97 . 68-34=	
18 . 69-64=	38 . 76+13=	58 . 215-34=	78 . 159-106=	98 . 8-1=	
19 . 164-150=	39 . 177+2=	59 . 123-52=	79 . 295+1=	99 . 12+56=	
20 . 268-241=	40 . 252+44=	60 . 112-31=	80 . 201-90=	100 . 180+89=	

A6 – Mental Arithmetic within 1000-进退位组合-算式

1 . 926+28=	21 . 656+236=	41 . 536+238=	61 . 425-236=	81 . 2+988=
2 . 804-616=	22 . 658+82=	42 . 343-297=	62 . 131+359=	82 . 186+439=
3 . 901+29=	23 . 242-97=	43 . 787+6=	63 . 78+512=	83 . 872-68=
4 . 77+683=	24 . 139+763=	44 . 39+567=	64 . 942-664=	84 . 963+28=
5 . 622-145=	25 . 602-187=	45 . 693-469=	65 . 619+13=	85 . 807-648=
6 . 68-19=	26 . 277+129=	46 . 376-109=	66 . 369+504=	86 . 27+338=
7 . 242-133=	27 . 431+79=	47 . 1+709=	67 . 994-679=	87 . 643-409=
8 . 434-247=	28 . 902+9=	48 . 512+468=	68 . 49+863=	88 . 204-95=
9 . 806-147=	29 . 791-406=	49 . 41+39=	69 . 12-4=	89 . 39+625=
10 . 852+38=	30 . 19+245=	50 . 77-28=	70 . 43-25=	90 . 369+62=
11 . 225+689=	31 . 385-157=	51 . 497+494=	71 . 467-399=	91 . 533+257=
12 . 79+919=	32 . 368-39=	52 . 738-59=	72 . 268-49=	92 . 791-644=
13 . 95-17=	33 . 139+424=	53 . 28-19=	73 . 252-183=	93 . 901-239=
14 . 417-8=	34 . 504-417=	54 . 927-659=	74 . 323+119=	94 . 291-38=
15 . 95-18=	35 . 696-339=	55 . 938+29=	75 . 436+488=	95 . 175-86=
16 . 278+396=	36 . 371+49=	56 . 153-147=	76 . 46+797=	96 . 625-116=
17 . 624+56=	37 . 189+586=	57 . 187-48=	77 . 179+632=	97 . 964-597=
18 . 435-257=	38 . 323+59=	58 . 466-327=	78 . 886-437=	98 . 57-39=
19 . 441-366=	39 . 434+149=	59 . 728+108=	79 . 775-186=	99 . 18+375=
20 . 382+289=	40 . 742+178=	60 . 537-429=	80 . 671-394=	100 . 29+401=

A6 – Mental Arithmetic within 1000-进退位组合-算式

Answer

1 . 954	21 . 892	41 . 774	61 . 189	81 . 990
2 . 188	22 . 740	42 . 46	62 . 490	82 . 625
3 . 930	23 . 145	43 . 793	63 . 590	83 . 804
4 . 760	24 . 902	44 . 606	64 . 278	84 . 991
5 . 477	25 . 415	45 . 224	65 . 632	85 . 159
6 . 49	26 . 406	46 . 267	66 . 873	86 . 365
7 . 109	27 . 510	47 . 710	67 . 315	87 . 234
8 . 187	28 . 911	48 . 980	68 . 912	88 . 109
9 . 659	29 . 385	49 . 80	69 . 8	89 . 664
10 . 890	30 . 264	50 . 49	70 . 18	90 . 431
11 . 914	31 . 228	51 . 991	71 . 68	91 . 790
12 . 998	32 . 329	52 . 679	72 . 219	92 . 147
13 . 78	33 . 563	53 . 9	73 . 69	93 . 662
14 . 409	34 . 87	54 . 268	74 . 442	94 . 253
15 . 77	35 . 357	55 . 967	75 . 924	95 . 89
16 . 674	36 . 420	56 . 6	76 . 843	96 . 509
17 . 680	37 . 775	57 . 139	77 . 811	97 . 367
18 . 178	38 . 382	58 . 139	78 . 449	98 . 18
19 . 75	39 . 583	59 . 836	79 . 589	99 . 393
20 . 671	40 . 920	60 . 108	80 . 277	100 . 430

A7 - Mental Arithmetic within 1000-进位加不退位减-算式

1 . 676+276=	21 . 268+553=	41 . 983+9=	61 . 266+334=	81 . 79+238=	A1
2 . 419+572=	22 . 231+249=	42 . 98+554=	62 . 408+222=	82 . 395+229=	A2
3 . 193+217=	23 . 587+73=	43 . 16+558=	63 . 288+686=	83 . 418+555=	A3
4 . 237+354=	24 . 458+355=	44 . 166+406=	64 . 278+488=	84 . 8+957=	A4
5 . 688+112=	25 . 778+193=	45 . 108+492=	65 . 531+349=	85 . 342+309=	A5
6 . 364+539=	26 . 135+706=	46 . 138+486=	66 . 937+8=	86 . 599+92=	A6
7 . 419+292=	27 . 875+58=	47 . 314+216=	67 . 262+508=	87 . 169+703=	A7
8 . 527+337=	28 . 817+79=	48 . 389+524=	68 . 957+35=	88 . 18+973=	A8
9 . 488+182=	29 . 314+596=	49 . 19+424=	69 . 97+693=	89 . 657+333=	NAV
10 . 87+66=	30 . 25+935=	50 . 29+929=	70 . 368+427=	90 . 47+496=	B
11 . 17+343=	31 . 526+408=	51 . 157+344=	71 . 327+304=	91 . 296+645=	C
12 . 46+125=	32 . 356+398=	52 . 246+176=	72 . 276+288=	92 . 295+488=	D
13 . 29+801=	33 . 266+706=	53 . 932+38=	73 . 349+581=	93 . 179+499=	E
14 . 119+836=	34 . 489+1=	54 . 7+926=	74 . 39+951=	94 . 436+27=	F
15 . 98+765=	35 . 831+89=	55 . 112+818=	75 . 169+662=	95 . 127+133=	
16 . 864+46=	36 . 489+311=	56 . 729+108=	76 . 571+379=	96 . 808+89=	
17 . 346+326=	37 . 316+305=	57 . 349+187=	77 . 616+247=	97 . 803+69=	
18 . 577+204=	38 . 729+244=	58 . 257+705=	78 . 342+418=	98 . 386+297=	
19 . 367+56=	39 . 653+47=	59 . 358+23=	79 . 124+837=	99 . 76+866=	
20 . 764+219=	40 . 203+707=	60 . 119+405=	80 . 7+356=	100 . 175+375=	

A8 - Mental Arithmetic within 300-任意混合-算式

1 . 47-29=	21 . 228+41=	41 . 33-32=	61 . 38-9=	81 . 244+52=	A1
2 . 281-156=	22 . 188+81=	42 . 11-6=	62 . 78+151=	82 . 61+237=	A2
3 . 10+69=	23 . 127+132=	43 . 139+131=	63 . 55-36=	83 . 27-18=	A3
4 . 93-59=	24 . 238-224=	44 . 107+119=	64 . 236-27=	84 . 24+257=	A4
5 . 212+16=	25 . 239+29=	45 . 1+257=	65 . 186+72=	85 . 273-49=	A5
6 . 203+96=	26 . 59+150=	46 . 212+61=	66 . 33-22=	86 . 291-251=	A6
7 . 126-62=	27 . 194-135=	47 . 213-145=	67 . 298-256=	87 . 96+111=	A7
8 . 59-11=	28 . 289+0=	48 . 266-123=	68 . 159+94=	88 . 253-201=	A8
9 . 63+56=	29 . 69+203=	49 . 81+128=	69 . 4+179=	89 . 136-17=	NAV
10 . 52-5=	30 . 125-89=	50 . 67-39=	70 . 237+1=	90 . 86-53=	B
11 . 1+206=	31 . 229+30=	51 . 55+35=	71 . 251-111=	91 . 7+242=	C
12 . 59+69=	32 . 41-11=	52 . 274-71=	72 . 227+56=	92 . 22+225=	D
13 . 297-28=	33 . 194+47=	53 . 282-86=	73 . 234+59=	93 . 72+49=	E
14 . 272+8=	34 . 243-13=	54 . 92+203=	74 . 17+256=	94 . 214+41=	F
15 . 115-66=	35 . 238-149=	55 . 92+89=	75 . 292-111=	95 . 109+53=	
16 . 143-104=	36 . 132-95=	56 . 21-0=	76 . 88+211=	96 . 132-71=	
17 . 193+83=	37 . 295-204=	57 . 46-5=	77 . 12+228=	97 . 7-3=	
18 . 25+255=	38 . 246-147=	58 . 8+284=	78 . 216-61=	98 . 237-198=	
19 . 27+92=	39 . 126+13=	59 . 87-34=	79 . 12+6=	99 . 220+57=	
20 . 106+109=	40 . 110+109=	60 . 285-177=	80 . 145+19=	100 . 58-48=	

第二章 Multiplication 乘 & Division 除

This Chapter focuses on basic multiplication and division skills.

B1	乘法	Multiplication
B2	除法	Division
B3	乘除混合	Multiplication and Division
B4	乘混加减	Multiplication with Addition and Subtraction
B5	除混加减	Division with Addition and Subtraction
B6a	加减乘除 (算式)	Addition or Subtraction or Multiplication or Division (sums)
B6b	加减乘除 (填空)	Addition or Subtraction or Multiplication or Division (fill in the blanks)
B7	加减混合	Addition and Subtraction

This work is licensed under a [Creative Commons "Attribution-NonCommercial-NoDerivatives 4.0 International"](https://creativecommons.org/licenses/by-nc-nd/4.0/) license.



B.pdf 47 2018/8/21 21:51:07



B1 - Mental Arithmetic - 乘法-算式

1 . $2 \times 5 =$

2 . $11 \times 5 =$

3 . $6 \times 10 =$

4 . $4 \times 1 =$

5 . $2 \times 6 =$

6 . $6 \times 2 =$

7 . $10 \times 8 =$

8 . $11 \times 3 =$

9 . $7 \times 1 =$

10 . $8 \times 2 =$

11 . $2 \times 1 =$

12 . $8 \times 10 =$

13 . $8 \times 10 =$

14 . $7 \times 3 =$

15 . $10 \times 2 =$

16 . $5 \times 11 =$

17 . $11 \times 6 =$

18 . $10 \times 11 =$

19 . $8 \times 9 =$

20 . $5 \times 1 =$

21 . $8 \times 7 =$

22 . $6 \times 6 =$

23 . $2 \times 1 =$

24 . $6 \times 4 =$

25 . $5 \times 9 =$

26 . $11 \times 11 =$

27 . $11 \times 9 =$

28 . $11 \times 7 =$

29 . $8 \times 4 =$

30 . $6 \times 3 =$

31 . $5 \times 6 =$

32 . $5 \times 3 =$

33 . $3 \times 11 =$

34 . $8 \times 5 =$

35 . $10 \times 6 =$

36 . $7 \times 7 =$

37 . $7 \times 1 =$

38 . $7 \times 4 =$

39 . $3 \times 7 =$

40 . $8 \times 9 =$

41 . $9 \times 7 =$

42 . $11 \times 11 =$

43 . $5 \times 9 =$

44 . $5 \times 5 =$

45 . $1 \times 7 =$

46 . $5 \times 6 =$

47 . $9 \times 7 =$

48 . $4 \times 11 =$

49 . $5 \times 4 =$

50 . $1 \times 9 =$

51 . $8 \times 7 =$

52 . $11 \times 3 =$

53 . $6 \times 9 =$

54 . $2 \times 7 =$

55 . $6 \times 2 =$

56 . $7 \times 10 =$

57 . $5 \times 6 =$

58 . $4 \times 1 =$

59 . $7 \times 6 =$

60 . $6 \times 8 =$

61 . $2 \times 6 =$

62 . $3 \times 7 =$

63 . $4 \times 5 =$

64 . $5 \times 9 =$

65 . $8 \times 6 =$

66 . $9 \times 3 =$

67 . $5 \times 3 =$

68 . $9 \times 9 =$

69 . $2 \times 3 =$

70 . $7 \times 3 =$

71 . $9 \times 5 =$

72 . $11 \times 4 =$

73 . $3 \times 2 =$

74 . $11 \times 8 =$

75 . $7 \times 2 =$

76 . $3 \times 6 =$

77 . $5 \times 6 =$

78 . $5 \times 11 =$

79 . $2 \times 1 =$

80 . $9 \times 4 =$

81 . $5 \times 3 =$

82 . $4 \times 6 =$

83 . $6 \times 6 =$

84 . $11 \times 3 =$

85 . $5 \times 9 =$

86 . $9 \times 11 =$

87 . $9 \times 1 =$

88 . $7 \times 4 =$

89 . $4 \times 1 =$

90 . $10 \times 6 =$

91 . $11 \times 1 =$

92 . $9 \times 8 =$

93 . $2 \times 7 =$

94 . $2 \times 8 =$

95 . $9 \times 4 =$

96 . $6 \times 4 =$

97 . $3 \times 4 =$

98 . $3 \times 7 =$

99 . $5 \times 3 =$

. $7 \times 1 =$

B1

B2

B3

B4

B5

B6a

B6b

B7

NAV

A

C

D

E

F

B.pdf 107 2018/8/21 21:51:08



B2 - Mental Arithmetic - 除法-算式

- | | | | | |
|----------------------|----------------------|----------------------|----------------------|---------------------|
| 1 . $99 \div 11 =$ | 21 . $18 \div 3 =$ | 41 . $2 \div 2 =$ | 61 . $3 \div 1 =$ | 81 . $70 \div 10 =$ |
| 2 . $16 \div 8 =$ | 22 . $30 \div 10 =$ | 42 . $77 \div 11 =$ | 62 . $36 \div 9 =$ | 82 . $36 \div 6 =$ |
| 3 . $10 \div 10 =$ | 23 . $24 \div 6 =$ | 43 . $12 \div 4 =$ | 63 . $88 \div 11 =$ | 83 . $12 \div 4 =$ |
| 4 . $56 \div 8 =$ | 24 . $40 \div 8 =$ | 44 . $110 \div 11 =$ | 64 . $40 \div 8 =$ | 84 . $8 \div 1 =$ |
| 5 . $11 \div 11 =$ | 25 . $16 \div 4 =$ | 45 . $22 \div 11 =$ | 65 . $14 \div 2 =$ | 85 . $9 \div 1 =$ |
| 6 . $8 \div 1 =$ | 26 . $6 \div 2 =$ | 46 . $16 \div 2 =$ | 66 . $6 \div 2 =$ | 86 . $15 \div 3 =$ |
| 7 . $77 \div 7 =$ | 27 . $18 \div 3 =$ | 47 . $9 \div 9 =$ | 67 . $110 \div 11 =$ | 87 . $48 \div 8 =$ |
| 8 . $40 \div 5 =$ | 28 . $110 \div 11 =$ | 48 . $11 \div 1 =$ | 68 . $110 \div 10 =$ | 88 . $63 \div 9 =$ |
| 9 . $12 \div 2 =$ | 29 . $99 \div 11 =$ | 49 . $12 \div 6 =$ | 69 . $77 \div 11 =$ | 89 . $77 \div 7 =$ |
| 10 . $20 \div 10 =$ | 30 . $12 \div 4 =$ | 50 . $3 \div 3 =$ | 70 . $55 \div 11 =$ | 90 . $3 \div 3 =$ |
| 11 . $27 \div 9 =$ | 31 . $9 \div 3 =$ | 51 . $70 \div 10 =$ | 71 . $50 \div 10 =$ | 91 . $10 \div 1 =$ |
| 12 . $9 \div 9 =$ | 32 . $8 \div 8 =$ | 52 . $44 \div 4 =$ | 72 . $44 \div 4 =$ | 92 . $18 \div 3 =$ |
| 13 . $48 \div 8 =$ | 33 . $12 \div 4 =$ | 53 . $99 \div 11 =$ | 73 . $40 \div 8 =$ | 93 . $44 \div 11 =$ |
| 14 . $56 \div 8 =$ | 34 . $77 \div 11 =$ | 54 . $24 \div 8 =$ | 74 . $55 \div 5 =$ | 94 . $18 \div 2 =$ |
| 15 . $45 \div 5 =$ | 35 . $60 \div 6 =$ | 55 . $100 \div 10 =$ | 75 . $6 \div 2 =$ | 95 . $12 \div 6 =$ |
| 16 . $110 \div 11 =$ | 36 . $32 \div 4 =$ | 56 . $42 \div 7 =$ | 76 . $20 \div 10 =$ | 96 . $9 \div 3 =$ |
| 17 . $36 \div 6 =$ | 37 . $3 \div 1 =$ | 57 . $10 \div 2 =$ | 77 . $30 \div 3 =$ | 97 . $36 \div 4 =$ |
| 18 . $70 \div 10 =$ | 38 . $36 \div 4 =$ | 58 . $2 \div 2 =$ | 78 . $25 \div 5 =$ | 98 . $60 \div 6 =$ |
| 19 . $24 \div 3 =$ | 39 . $56 \div 7 =$ | 59 . $6 \div 6 =$ | 79 . $50 \div 5 =$ | 99 . $88 \div 11 =$ |
| 20 . $8 \div 2 =$ | 40 . $110 \div 11 =$ | 60 . $30 \div 5 =$ | 80 . $35 \div 5 =$ | # . $5 \div 1 =$ |

B1

B2

B3

B4

B5

B6a

B6b

B7

NAV

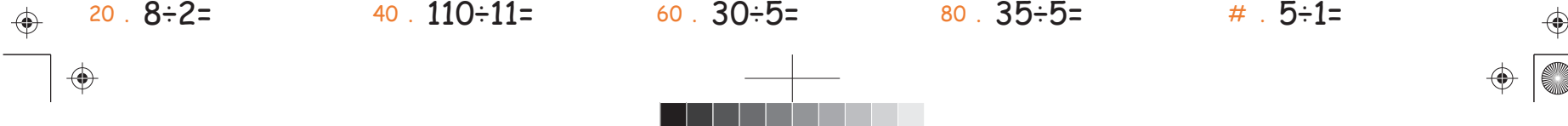
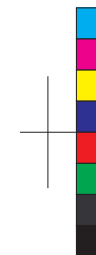
A

C

D

E

F



B3 - Mental Arithmetic - 乘除混合-算式

1 . $4 \times 1 =$	21 . $7 \times 8 =$	41 . $9 \times 6 =$	61 . $5 \times 5 =$	81 . $30 \div 5 =$	
2 . $7 \times 8 =$	22 . $3 \times 8 =$	42 . $27 \div 3 =$	62 . $18 \div 9 =$	82 . $18 \div 6 =$	B1
3 . $16 \div 8 =$	23 . $1 \times 2 =$	43 . $11 \div 1 =$	63 . $90 \div 10 =$	83 . $2 \times 1 =$	B2
4 . $3 \times 3 =$	24 . $30 \div 5 =$	44 . $55 \div 5 =$	64 . $35 \div 7 =$	84 . $9 \times 9 =$	B3
5 . $9 \times 1 =$	25 . $6 \times 5 =$	45 . $36 \div 9 =$	65 . $1 \times 10 =$	85 . $35 \div 7 =$	B4
6 . $4 \times 6 =$	26 . $18 \div 6 =$	46 . $60 \div 6 =$	66 . $8 \times 11 =$	86 . $6 \times 8 =$	B5
7 . $25 \div 5 =$	27 . $2 \times 5 =$	47 . $60 \div 10 =$	67 . $6 \times 7 =$	87 . $3 \div 3 =$	B6a
8 . $1 \times 7 =$	28 . $8 \div 8 =$	48 . $66 \div 6 =$	68 . $5 \times 11 =$	88 . $24 \div 6 =$	B6b
9 . $9 \times 9 =$	29 . $28 \div 4 =$	49 . $30 \div 10 =$	69 . $9 \div 9 =$	89 . $80 \div 8 =$	B7
10 . $1 \times 9 =$	30 . $8 \times 8 =$	50 . $11 \times 10 =$	70 . $11 \times 2 =$	90 . $2 \times 7 =$	NAV
11 . $32 \div 8 =$	31 . $6 \div 6 =$	51 . $32 \div 8 =$	71 . $7 \times 1 =$	91 . $88 \div 11 =$	A
12 . $8 \div 8 =$	32 . $9 \times 10 =$	52 . $3 \times 10 =$	72 . $7 \times 11 =$	92 . $2 \times 11 =$	C
13 . $24 \div 4 =$	33 . $7 \times 11 =$	53 . $10 \times 3 =$	73 . $54 \div 9 =$	93 . $9 \times 11 =$	D
14 . $5 \times 8 =$	34 . $15 \div 5 =$	54 . $12 \div 3 =$	74 . $2 \times 9 =$	94 . $55 \div 5 =$	E
15 . $49 \div 7 =$	35 . $11 \times 8 =$	55 . $3 \times 1 =$	75 . $9 \times 5 =$	95 . $2 \div 1 =$	F
16 . $56 \div 8 =$	36 . $4 \times 2 =$	56 . $15 \div 3 =$	76 . $36 \div 9 =$	96 . $7 \times 6 =$	
17 . $81 \div 9 =$	37 . $72 \div 8 =$	57 . $45 \div 9 =$	77 . $5 \div 5 =$	97 . $11 \times 8 =$	
18 . $5 \times 8 =$	38 . $12 \div 6 =$	58 . $11 \times 2 =$	78 . $5 \times 6 =$	98 . $9 \times 8 =$	
19 . $3 \times 5 =$	39 . $10 \times 8 =$	59 . $9 \times 3 =$	79 . $5 \div 5 =$	99 . $4 \div 2 =$	
20 . $10 \div 5 =$	40 . $10 \times 10 =$	60 . $5 \times 3 =$	80 . $12 \div 4 =$	# . $3 \times 4 =$	

B4 - Mental Arithmetic - 乘混加減-算式

1 . $8 \times 8 =$	21 . $70 - 67 =$	41 . $8 \times 9 =$	61 . $1 \times 3 =$	81 . $16 + 29 =$	
2 . $9 \times 9 =$	22 . $74 - 23 =$	42 . $67 - 57 =$	62 . $8 \times 6 =$	82 . $60 - 57 =$	B1
3 . $56 + 14 =$	23 . $33 + 17 =$	43 . $1 \times 8 =$	63 . $5 \times 6 =$	83 . $5 \times 3 =$	B2
4 . $28 + 51 =$	24 . $86 - 76 =$	44 . $5 \times 8 =$	64 . $19 + 33 =$	84 . $2 \times 1 =$	B3
5 . $23 - 9 =$	25 . $63 + 17 =$	45 . $25 + 18 =$	65 . $10 \times 9 =$	85 . $2 \times 1 =$	B4
6 . $91 - 9 =$	26 . $10 \times 5 =$	46 . $25 + 28 =$	66 . $10 \times 2 =$	86 . $82 + 13 =$	B4
7 . $94 - 17 =$	27 . $2 \times 8 =$	47 . $5 \times 11 =$	67 . $24 + 20 =$	87 . $41 + 47 =$	B5
8 . $2 \times 3 =$	28 . $55 + 22 =$	48 . $7 \times 8 =$	68 . $64 - 26 =$	88 . $92 - 60 =$	B6a
9 . $16 + 27 =$	29 . $51 + 12 =$	49 . $57 - 18 =$	69 . $71 - 70 =$	89 . $46 - 40 =$	B6b
10 . $62 + 29 =$	30 . $3 \times 9 =$	50 . $10 \times 1 =$	70 . $24 + 27 =$	90 . $48 + 22 =$	B7
11 . $3 \times 3 =$	31 . $4 \times 1 =$	51 . $6 \times 2 =$	71 . $90 - 18 =$	91 . $4 \times 7 =$	NAV
12 . $92 - 56 =$	32 . $8 \times 8 =$	52 . $6 \times 7 =$	72 . $1 \times 5 =$	92 . $43 + 40 =$	
13 . $10 \times 10 =$	33 . $10 \times 3 =$	53 . $8 \times 3 =$	73 . $7 \times 2 =$	93 . $2 \times 9 =$	A
14 . $7 \times 8 =$	34 . $68 - 18 =$	54 . $90 - 83 =$	74 . $3 \times 4 =$	94 . $11 \times 8 =$	C
15 . $3 \times 11 =$	35 . $16 + 34 =$	55 . $59 + 15 =$	75 . $68 + 18 =$	95 . $3 \times 10 =$	
16 . $3 \times 11 =$	36 . $5 \times 3 =$	56 . $2 \times 10 =$	76 . $45 + 22 =$	96 . $2 \times 6 =$	D
17 . $77 - 19 =$	37 . $71 - 60 =$	57 . $3 \times 3 =$	77 . $9 \times 5 =$	97 . $7 \times 11 =$	E
18 . $96 - 0 =$	38 . $11 \times 10 =$	58 . $76 - 71 =$	78 . $48 + 19 =$	98 . $48 + 20 =$	F
19 . $34 + 27 =$	39 . $45 + 17 =$	59 . $61 - 60 =$	79 . $10 \times 9 =$	99 . $87 - 29 =$	
20 . $35 + 18 =$	40 . $57 + 19 =$	60 . $28 + 19 =$	80 . $11 + 27 =$	# . $8 \times 10 =$	

B5 - Mental Arithmetic - 除混加减-混合题型

- | | | | | |
|---------------------|-----------------------|---------------------|---------------------|---------------------|
| 1 . $64+18=$ | 21 . $60\div 10=$ | 41 . $91-()=80$ | 61 . $49-16=$ | 81 . $()\div 11=2$ |
| 2 . $38-()=14$ | 22 . $80\div ()=10$ | 42 . $91-9=$ | 62 . $5\div 5=$ | 82 . $54-16=$ |
| 3 . $16\div 4=$ | 23 . $()+10=95$ | 43 . $72\div 8=$ | 63 . $69-16=$ | 83 . $()\div 2=10$ |
| 4 . $()+11=71$ | 24 . $110\div ()=10$ | 44 . $88\div ()=8$ | 64 . $17+27=$ | 84 . $()\div 3=6$ |
| 5 . $35+24=$ | 25 . $()-66=5$ | 45 . $110\div 10=$ | 65 . $6-3=$ | 85 . $3\div ()=1$ |
| 6 . $61-25=$ | 26 . $57-11=$ | 46 . $9\div 1=$ | 66 . $17+()=78$ | 86 . $15+22=$ |
| 7 . $86-18=$ | 27 . $90-3=$ | 47 . $()\div 2=8$ | 67 . $45+()=62$ | 87 . $()+61=78$ |
| 8 . $()-32=53$ | 28 . $()+19=54$ | 48 . $()\div 7=2$ | 68 . $()\div 2=1$ | 88 . $41-32=$ |
| 9 . $36+10=$ | 29 . $45-25=$ | 49 . $67-()=30$ | 69 . $11\div 11=$ | 89 . $()+10=73$ |
| 10 . $55\div 5=$ | 30 . $()-16=64$ | 50 . $()\div 7=5$ | 70 . $8\div 8=$ | 90 . $15\div ()=5$ |
| 11 . $()\div 11=2$ | 31 . $36-()=4$ | 51 . $70\div 7=$ | 71 . $25+()=51$ | 91 . $40\div 10=$ |
| 12 . $14\div 2=$ | 32 . $()\div 10=11$ | 52 . $63\div 9=$ | 72 . $47+10=$ | 92 . $4\div 1=$ |
| 13 . $83-()=74$ | 33 . $90\div ()=10$ | 53 . $88-67=$ | 73 . $1\div ()=1$ | 93 . $46-16=$ |
| 14 . $()\div 1=3$ | 34 . $()+26=40$ | 54 . $2\div ()=2$ | 74 . $10\div ()=2$ | 94 . $24\div 6=$ |
| 15 . $67-()=20$ | 35 . $36+16=$ | 55 . $()\div 1=5$ | 75 . $()-26=57$ | 95 . $33+21=$ |
| 16 . $2\div ()=2$ | 36 . $28+29=$ | 56 . $14-()=6$ | 76 . $()\div 6=1$ | 96 . $15+()=39$ |
| 17 . $6\div 1=$ | 37 . $77-41=$ | 57 . $24+14=$ | 77 . $43+24=$ | 97 . $16-()=8$ |
| 18 . $53+11=$ | 38 . $44+()=55$ | 58 . $51+14=$ | 78 . $60\div 6=$ | 98 . $55+22=$ |
| 19 . $32+15=$ | 39 . $15\div ()=3$ | 59 . $()+16=92$ | 79 . $85-()=69$ | 99 . $()\div 7=4$ |
| 20 . $66\div 6=$ | 40 . $1\div ()=1$ | 60 . $()\div 5=9$ | 80 . $14+35=$ | # . $50+()=60$ |

B1

B2

B3

B4

B5

B6a

B6b

B7

NAV

A

C

D

E

F

B6 - Mental Arithmetic - 加減乘除-算式

1 . $15 \div 3 =$

21 . $11 \times 9 =$

41 . $4 \times 7 =$

61 . $16 + 26 =$

81 . $56 \div 7 =$

2 . $97 - 49 =$

22 . $40 \div 8 =$

42 . $62 - 6 =$

62 . $21 \div 7 =$

82 . $46 + 20 =$

B1

3 . $15 + 23 =$

23 . $42 + 28 =$

43 . $37 + 23 =$

63 . $10 \times 7 =$

83 . $35 \div 5 =$

B2

4 . $9 \times 8 =$

24 . $75 - 40 =$

44 . $1 \times 4 =$

64 . $7 \div 1 =$

84 . $7 \times 9 =$

B3

5 . $99 - 35 =$

25 . $87 - 85 =$

45 . $35 + 18 =$

65 . $93 - 70 =$

85 . $82 - 34 =$

B4

6 . $47 - 4 =$

26 . $84 - 29 =$

46 . $10 \times 3 =$

66 . $99 - 64 =$

86 . $35 \div 5 =$

B5

7 . $30 \div 3 =$

27 . $47 + 22 =$

47 . $9 \times 1 =$

67 . $90 - 34 =$

87 . $67 + 15 =$

8 . $8 \div 2 =$

28 . $54 + 27 =$

48 . $10 \times 9 =$

68 . $25 + 18 =$

88 . $15 \div 5 =$

B6a

9 . $60 + 17 =$

29 . $64 + 25 =$

49 . $64 \div 8 =$

69 . $13 + 29 =$

89 . $20 + 26 =$

B6b

10 . $52 - 21 =$

30 . $40 \div 10 =$

50 . $1 \times 2 =$

70 . $12 + 42 =$

90 . $70 \div 10 =$

B7

11 . $14 + 46 =$

31 . $2 \times 11 =$

51 . $90 \div 9 =$

71 . $59 - 55 =$

91 . $49 - 35 =$

12 . $16 \div 2 =$

32 . $43 + 20 =$

52 . $70 \div 10 =$

72 . $5 \times 10 =$

92 . $8 \times 2 =$

NAV

13 . $1 \times 9 =$

33 . $5 \times 2 =$

53 . $20 + 57 =$

73 . $65 + 21 =$

93 . $75 - 36 =$

A

14 . $7 \times 9 =$

34 . $47 - 42 =$

54 . $14 + 53 =$

74 . $9 \times 9 =$

94 . $66 \div 6 =$

C

15 . $5 \times 11 =$

35 . $40 \div 8 =$

55 . $100 \div 10 =$

75 . $110 \div 11 =$

95 . $17 + 76 =$

16 . $11 \times 3 =$

36 . $4 \times 7 =$

56 . $24 \div 3 =$

76 . $24 \div 8 =$

96 . $8 \div 8 =$

D

17 . $45 \div 9 =$

37 . $39 + 35 =$

57 . $63 + 26 =$

77 . $8 \div 8 =$

97 . $7 \div 1 =$

E

18 . $12 \div 4 =$

38 . $53 + 16 =$

58 . $8 \times 8 =$

78 . $83 - 62 =$

98 . $65 - 9 =$

F

19 . $96 - 57 =$

39 . $56 \div 8 =$

59 . $1 \times 5 =$

79 . $76 - 31 =$

99 . $69 - 4 =$

20 . $21 \div 7 =$

40 . $84 - 51 =$

60 . $10 \times 2 =$

80 . $1 \times 6 =$

. $76 - 74 =$

B6 - Mental Arithmetic - 加減乘除-填空

- | | | | | |
|--------------------------|--------------------------|---------------------------|--------------------------|----------------------------|
| 1 . $35 \div () = 7$ | 21 . $77 \div () = 11$ | 41 . $95 - () = 62$ | 61 . $59 + () = 72$ | 81 . $28 \div () = 7$ |
| 2 . $87 - () = 82$ | 22 . $() + 12 = 65$ | 42 . $() \times 11 = 33$ | 62 . $() \div 10 = 5$ | 82 . $80 \div () = 8$ |
| 3 . $() \times 1 = 11$ | 23 . $20 - () = 19$ | 43 . $37 + () = 66$ | 63 . $() + 19 = 34$ | 83 . $6 \times () = 24$ |
| 4 . $6 \times () = 66$ | 24 . $59 + () = 86$ | 44 . $49 \div () = 7$ | 64 . $() \div 2 = 10$ | 84 . $9 \times () = 18$ |
| 5 . $43 + () = 55$ | 25 . $49 - () = 40$ | 45 . $21 + () = 50$ | 65 . $2 \times () = 22$ | 85 . $70 - () = 63$ |
| 6 . $() + 27 = 70$ | 26 . $() \times 1 = 9$ | 46 . $() \div 8 = 10$ | 66 . $1 \times () = 11$ | 86 . $() + 26 = 37$ |
| 7 . $9 \times () = 54$ | 27 . $() \times 1 = 5$ | 47 . $() \times 5 = 10$ | 67 . $() + 19 = 55$ | 87 . $26 - () = 6$ |
| 8 . $() \div 1 = 3$ | 28 . $6 \times () = 24$ | 48 . $() \times 10 = 70$ | 68 . $() \div 5 = 6$ | 88 . $() \times 5 = 10$ |
| 9 . $31 + () = 53$ | 29 . $60 - () = 40$ | 49 . $24 \div () = 8$ | 69 . $() \div 10 = 9$ | 89 . $64 + () = 87$ |
| 10 . $() - 50 = 3$ | 30 . $8 \div () = 4$ | 50 . $84 - () = 13$ | 70 . $() + 23 = 87$ | 90 . $() - 7 = 3$ |
| 11 . $99 \div () = 9$ | 31 . $43 - () = 13$ | 51 . $() - 38 = 16$ | 71 . $() - 25 = 70$ | 91 . $() \div 3 = 11$ |
| 12 . $6 \times () = 42$ | 32 . $() - 0 = 75$ | 52 . $() \times 6 = 60$ | 72 . $() - 15 = 62$ | 92 . $() \times 4 = 40$ |
| 13 . $47 + () = 84$ | 33 . $() + 19 = 83$ | 53 . $() \div 3 = 4$ | 73 . $() + 44 = 73$ | 93 . $5 \times () = 40$ |
| 14 . $30 + () = 89$ | 34 . $() + 64 = 87$ | 54 . $() \times 2 = 20$ | 74 . $49 - () = 18$ | 94 . $() \times 1 = 7$ |
| 15 . $39 - () = 36$ | 35 . $38 + () = 52$ | 55 . $() - 83 = 16$ | 75 . $() \div 6 = 2$ | 95 . $() \times 1 = 8$ |
| 16 . $() \div 8 = 1$ | 36 . $() \div 9 = 11$ | 56 . $() + 27 = 72$ | 76 . $() \times 1 = 1$ | 96 . $67 - () = 2$ |
| 17 . $() - 2 = 87$ | 37 . $63 \div () = 7$ | 57 . $() \div 7 = 1$ | 77 . $24 \div () = 3$ | 97 . $() \times 7 = 14$ |
| 18 . $75 - () = 18$ | 38 . $99 - () = 48$ | 58 . $() \times 3 = 15$ | 78 . $() - 20 = 25$ | 98 . $35 + () = 54$ |
| 19 . $60 \div () = 10$ | 39 . $95 - () = 54$ | 59 . $4 \times () = 20$ | 79 . $() \times 6 = 42$ | 99 . $() \times 11 = 110$ |
| 20 . $() + 16 = 69$ | 40 . $91 - () = 55$ | 60 . $() - 0 = 95$ | 80 . $() \times 5 = 45$ | # . $() - 34 = 61$ |

B1

B2

B3

B4

B5

B6a

B6b

B7

NAV

A

C

D

E

F



B7 - Mental Arithmetic - 加減混合-算式

- 1 . 15+25=

21 . 77-2=

41 . 55+18=

61 . 82-32=

81 . 11+29=
- 2 . 36+29=

22 . 38+26=

42 . 60-38=

62 . 43-11=

82 . 20-19=
- 3 . 61-10=

23 . 76-33=

43 . 19+29=

63 . 53+23=

83 . 52+10=
- 4 . 18+41=

24 . 79-2=

44 . 68+17=

64 . 68+13=

84 . 73+15=
- 5 . 44+27=

25 . 34+33=

45 . 58+24=

65 . 66-0=

85 . 45+30=
- 6 . 46-24=

26 . 33-1=

46 . 98-40=

66 . 63-28=

86 . 88-28=
- 7 . 65-41=

27 . 99-75=

47 . 85-4=

67 . 39+38=

87 . 42+20=
- 8 . 54+20=

28 . 22+27=

48 . 54+14=

68 . 19-2=

88 . 19+63=
- 9 . 20+18=

29 . 65+29=

49 . 57-22=

69 . 89-75=

89 . 67-15=
- 10 . 20+14=

30 . 13-11=

50 . 57-13=

70 . 17+29=

90 . 53-23=
- 11 . 92-52=

31 . 47+23=

51 . 33+52=

71 . 50-6=

91 . 90-19=
- 12 . 87-62=

32 . 78-71=

52 . 42-42=

72 . 28+55=

92 . 32+26=
- 13 . 40-31=

33 . 41+20=

53 . 47-21=

73 . 45+15=

93 . 81-74=
- 14 . 72-69=

34 . 83-26=

54 . 29+24=

74 . 67+24=

94 . 71-33=
- 15 . 63-34=

35 . 91-53=

55 . 83-49=

75 . 53+15=

95 . 52+25=
- 16 . 80-9=

36 . 80-40=

56 . 27+28=

76 . 13+19=

96 . 32+21=
- 17 . 60+12=

37 . 60+13=

57 . 66-32=

77 . 30-7=

97 . 69+18=
- 18 . 87-33=

38 . 88-28=

58 . 81-3=

78 . 55-42=

98 . 85-34=
- 19 . 22+24=

39 . 69+16=

59 . 88-52=

79 . 21-17=

99 . 16+16=
- 20 . 22-19=

40 . 44+20=

60 . 28+11=

80 . 23+22=

. 64+19=



B7 - Mental Arithmetic - 加減混合-算式

Answer

- 1 . 40

21 . 75

41 . 73

61 . 50

81 . 40
- 2 . 65

22 . 64

42 . 22

62 . 32

82 . 1
- 3 . 51

23 . 43

43 . 48

63 . 76

83 . 62
- 4 . 59

24 . 77

44 . 85

64 . 81

84 . 88
- 5 . 71

25 . 67

45 . 82

65 . 66

85 . 75
- 6 . 22

26 . 32

46 . 58

66 . 35

86 . 60
- 7 . 24

27 . 24

47 . 81

67 . 77

87 . 62
- 8 . 74

28 . 49

48 . 68

68 . 17

88 . 82
- 9 . 38

29 . 94

49 . 35

69 . 14

89 . 52
- 10 . 34

30 . 2

50 . 44

70 . 46

90 . 30
- 11 . 40

31 . 70

51 . 85

71 . 44

91 . 71
- 12 . 25

32 . 7

52 . 0

72 . 83

92 . 58
- 13 . 9

33 . 61

53 . 26

73 . 60

93 . 7
- 14 . 3

34 . 57

54 . 53

74 . 91

94 . 38
- 15 . 29

35 . 38

55 . 34

75 . 68

95 . 77
- 16 . 71

36 . 40

56 . 55

76 . 32

96 . 53
- 17 . 72

37 . 73

57 . 34

77 . 23

97 . 87
- 18 . 54

38 . 60

58 . 78

78 . 13

98 . 51
- 19 . 46

39 . 85

59 . 36

79 . 4

99 . 32
- 20 . 3

40 . 64

60 . 39

80 . 45

. 83



第三章 Multiplication 乘 & Division 除 (Advanced)

C1	九九乘法表 (算式)	times table up to 9 (sums)
C2	英文乘法表 (算式)	times table up to 12 (sums)
C3	九九乘法表 (填空)	times table up to 9 (fill in the blanks)
C4	英文乘法表 (填空)	times table up to 12 (fill in the blanks)
C5	九九乘法表 (中文口诀)	times table (Chinese version)
C6	余数练习	division with remainder (up to 9 times table)
C7	余数练习	division with remainder (up to 12 times table)
C8	连乘	multiplication after multiplication ($\text{maxval} \times \text{maxval} \times \text{maxval}$)
C9	连除	division after division ($\text{maxval} \div \text{maxval} \div \text{maxval}$)
C10	乘连(and) 除	one multiplication and one division
C11	连乘或(or) 连除	(multiplication after multiplication) OR (division after division)
C12	乘除混合(mixture)题	any mixture of multiplication and division



Up to 9 Times Table Practice-算式

1 . 3×3=	21 . 6×4=	41 . 7×5=	61 . 2×4=	81 . 8×4=	101 . 4×8=	C1
2 . 8×8=	22 . 3×6=	42 . 3×6=	62 . 2×2=	82 . 9×4=	102 . 5×4=	C2
3 . 8×4=	23 . 8×9=	43 . 7×8=	63 . 5×4=	83 . 8×5=	103 . 3×8=	C3
4 . 3×7=	24 . 3×6=	44 . 4×9=	64 . 7×2=	84 . 7×6=	104 . 9×1=	C4
5 . 4×7=	25 . 9×1=	45 . 1×6=	65 . 4×7=	85 . 8×8=	105 . 8×5=	C5
6 . 9×8=	26 . 5×5=	46 . 8×2=	66 . 3×4=	86 . 6×3=	106 . 3×8=	C6
7 . 1×1=	27 . 7×2=	47 . 1×4=	67 . 7×2=	87 . 4×9=	107 . 7×3=	C7
8 . 9×7=	28 . 8×2=	48 . 7×9=	68 . 7×9=	88 . 2×5=	108 . 3×5=	C8
9 . 2×6=	29 . 7×9=	49 . 9×8=	69 . 2×9=	89 . 5×1=	109 . 4×2=	C9
10 . 1×5=	30 . 9×5=	50 . 3×9=	70 . 8×4=	90 . 8×5=	110 . 1×9=	C10
11 . 8×1=	31 . 7×1=	51 . 7×9=	71 . 9×5=	91 . 6×5=	111 . 5×8=	C11
12 . 7×7=	32 . 5×2=	52 . 2×4=	72 . 5×9=	92 . 2×1=	112 . 4×7=	C12
13 . 1×2=	33 . 4×7=	53 . 6×7=	73 . 6×6=	93 . 4×3=	113 . 9×2=	NAV
14 . 3×4=	34 . 4×6=	54 . 8×1=	74 . 1×6=	94 . 3×1=	114 . 2×4=	A
15 . 8×8=	35 . 3×3=	55 . 1×4=	75 . 8×3=	95 . 4×1=	115 . 3×7=	B
16 . 9×7=	36 . 9×5=	56 . 8×1=	76 . 6×5=	96 . 3×9=	116 . 2×6=	D
17 . 4×6=	37 . 7×3=	57 . 6×3=	77 . 7×5=	97 . 9×1=	117 . 7×5=	E
18 . 5×9=	38 . 3×9=	58 . 8×3=	78 . 2×4=	98 . 3×1=	118 . 1×9=	F
19 . 4×7=	39 . 5×8=	59 . 4×8=	79 . 1×4=	99 . 1×6=	119 . 1×3=	
20 . 5×9=	40 . 2×4=	60 . 9×8=	80 . 7×4=	100 . 5×7=	120 . 6×3=	

Up to 12 Times Table Practice-算式

1 . 5×11=	21 . 5×2=	41 . 9×1=	61 . 6×11=	81 . 4×6=	101 . 10×7=	C1
2 . 12×11=	22 . 8×10=	42 . 11×4=	62 . 7×2=	82 . 1×5=	102 . 7×7=	C2
3 . 8×1=	23 . 8×1=	43 . 2×10=	63 . 5×8=	83 . 7×9=	103 . 7×12=	C3
4 . 10×6=	24 . 1×1=	44 . 4×8=	64 . 3×1=	84 . 11×12=	104 . 7×5=	C4
5 . 8×6=	25 . 7×5=	45 . 11×5=	65 . 1×12=	85 . 9×2=	105 . 8×4=	C5
6 . 10×3=	26 . 5×4=	46 . 12×12=	66 . 6×6=	86 . 8×10=	106 . 11×5=	C6
7 . 5×6=	27 . 11×6=	47 . 7×10=	67 . 10×11=	87 . 10×5=	107 . 12×3=	C7
8 . 10×3=	28 . 8×10=	48 . 2×3=	68 . 8×12=	88 . 4×5=	108 . 3×5=	C8
9 . 8×8=	29 . 8×2=	49 . 11×10=	69 . 12×3=	89 . 6×2=	109 . 5×3=	C9
10 . 12×7=	30 . 2×10=	50 . 1×8=	70 . 9×1=	90 . 7×11=	110 . 6×10=	C10
11 . 10×8=	31 . 3×1=	51 . 1×2=	71 . 8×8=	91 . 1×8=	111 . 8×6=	C11
12 . 5×2=	32 . 8×6=	52 . 5×7=	72 . 3×3=	92 . 1×5=	112 . 2×1=	C12
13 . 3×7=	33 . 9×5=	53 . 9×2=	73 . 5×11=	93 . 8×4=	113 . 5×2=	NAV
14 . 1×9=	34 . 7×6=	54 . 1×8=	74 . 9×8=	94 . 6×1=	114 . 3×10=	A
15 . 3×8=	35 . 12×9=	55 . 8×10=	75 . 7×12=	95 . 6×10=	115 . 8×4=	B
16 . 8×12=	36 . 10×7=	56 . 7×9=	76 . 3×2=	96 . 12×9=	116 . 3×12=	D
17 . 5×2=	37 . 6×2=	57 . 10×9=	77 . 10×6=	97 . 5×3=	117 . 4×3=	E
18 . 3×11=	38 . 3×2=	58 . 4×4=	78 . 3×3=	98 . 5×6=	118 . 7×3=	F
19 . 4×11=	39 . 6×1=	59 . 11×10=	79 . 1×7=	99 . 3×6=	119 . 1×3=	
20 . 6×5=	40 . 4×7=	60 . 11×1=	80 . 1×8=	100 . 4×2=	120 . 11×1=	

Name: _____

Times Table Practice

Date: _____

- | | | | | |
|-------------------------------|-------------------------------|-------------------------------|-------------------------------|--------------------------------|
| 1. $3 \times 4 = (\quad)$ | 21. $(\quad) \times 6 = 18$ | 41. $(\quad) \times 4 = 16$ | 61. $(\quad) \times 4 = 8$ | 81. $(\quad) \times 9 = 54$ |
| 2. $2 \times 9 = (\quad)$ | 22. $(\quad) \times 9 = 45$ | 42. $3 \times 5 = (\quad)$ | 62. $5 \times 9 = (\quad)$ | 82. $6 \times 9 = (\quad)$ |
| 3. $2 \times (\quad) = 12$ | 23. $(\quad) \times 3 = 9$ | 43. $9 \times 9 = (\quad)$ | 63. $2 \times (\quad) = 6$ | 83. $3 \times (\quad) = 24$ |
| 4. $4 \times (\quad) = 24$ | 24. $1 \times 9 = (\quad)$ | 44. $5 \times 8 = (\quad)$ | 64. $4 \times (\quad) = 20$ | 84. $(\quad) \times 3 = 9$ |
| 5. $4 \times (\quad) = 36$ | 25. $5 \times 7 = (\quad)$ | 45. $4 \times 7 = (\quad)$ | 65. $5 \times (\quad) = 35$ | 85. $(\quad) \times 6 = 30$ |
| 6. $4 \times (\quad) = 16$ | 26. $7 \times 9 = (\quad)$ | 46. $2 \times 3 = (\quad)$ | 66. $9 \times (\quad) = 81$ | 86. $7 \times (\quad) = 63$ |
| 7. $1 \times (\quad) = 2$ | 27. $6 \times (\quad) = 54$ | 47. $(\quad) \times 2 = 4$ | 67. $7 \times 9 = (\quad)$ | 87. $(\quad) \times 7 = 49$ |
| 8. $(\quad) \times 9 = 9$ | 28. $3 \times (\quad) = 12$ | 48. $6 \times 9 = (\quad)$ | 68. $2 \times 8 = (\quad)$ | 88. $(\quad) \times 5 = 20$ |
| 9. $6 \times 9 = (\quad)$ | 29. $(\quad) \times 8 = 40$ | 49. $(\quad) \times 7 = 28$ | 69. $8 \times (\quad) = 72$ | 89. $(\quad) \times 7 = 14$ |
| 10. $(\quad) \times 4 = 12$ | 30. $(\quad) \times 9 = 18$ | 50. $2 \times (\quad) = 6$ | 70. $2 \times 9 = (\quad)$ | 90. $7 \times 9 = (\quad)$ |
| 11. $(\quad) \times 6 = 18$ | 31. $2 \times 2 = (\quad)$ | 51. $(\quad) \times 6 = 30$ | 71. $6 \times (\quad) = 42$ | 91. $1 \times 2 = (\quad)$ |
| 12. $2 \times 5 = (\quad)$ | 32. $2 \times 6 = (\quad)$ | 52. $4 \times 7 = (\quad)$ | 72. $6 \times 9 = (\quad)$ | 92. $(\quad) \times 9 = 63$ |
| 13. $(\quad) \times 8 = 16$ | 33. $(\quad) \times 4 = 12$ | 53. $(\quad) \times 8 = 56$ | 73. $7 \times (\quad) = 49$ | 93. $(\quad) \times 8 = 48$ |
| 14. $(\quad) \times 7 = 35$ | 34. $3 \times (\quad) = 18$ | 54. $2 \times (\quad) = 18$ | 74. $4 \times 8 = (\quad)$ | 94. $7 \times (\quad) = 56$ |
| 15. $3 \times (\quad) = 12$ | 35. $(\quad) \times 5 = 15$ | 55. $3 \times 9 = (\quad)$ | 75. $7 \times (\quad) = 63$ | 95. $8 \times (\quad) = 72$ |
| 16. $(\quad) \times 9 = 81$ | 36. $2 \times (\quad) = 4$ | 56. $5 \times (\quad) = 30$ | 76. $(\quad) \times 7 = 49$ | 96. $6 \times 7 = (\quad)$ |
| 17. $3 \times (\quad) = 21$ | 37. $6 \times 9 = (\quad)$ | 57. $(\quad) \times 9 = 18$ | 77. $(\quad) \times 7 = 49$ | 97. $1 \times (\quad) = 7$ |
| 18. $2 \times 9 = (\quad)$ | 38. $4 \times 6 = (\quad)$ | 58. $2 \times (\quad) = 10$ | 78. $(\quad) \times 7 = 49$ | 98. $(\quad) \times 6 = 24$ |
| 19. $2 \times (\quad) = 8$ | 39. $2 \times (\quad) = 18$ | 59. $6 \times (\quad) = 54$ | 79. $(\quad) \times 9 = 27$ | 99. $(\quad) \times 7 = 35$ |
| 20. $3 \times 5 = (\quad)$ | 40. $3 \times 5 = (\quad)$ | 60. $2 \times (\quad) = 8$ | 80. $8 \times (\quad) = 72$ | 100. $5 \times (\quad) = 35$ |

C1

C2

C3

C4

C5

C6

C7

C8

C9

C10

C11

C12

NAV

A

B

D

E

F



Name: _____

Times Table Practice

Date: _____

1. () \times 12=72
2. 8 \times 8=()
3. () \times 8=16
4. 9 \times ()=108
5. 10 \times ()=110
6. () \times 4=12
7. 8 \times 9=()
8. 3 \times ()=9
9. 6 \times 12=()
10. () \times 8=40
11. 3 \times ()=21
12. 5 \times 8=()
13. 3 \times ()=21
14. 1 \times ()=10
15. 2 \times 7=()
16. 2 \times ()=10
17. 10 \times 10=()
18. 5 \times 7=()
19. () \times 12=108
20. 3 \times ()=24
41. 5 \times ()=35
42. 3 \times ()=36
43. 9 \times 11=()
44. 3 \times ()=12
45. () \times 12=24
46. 3 \times 8=()
47. 9 \times 12=()
48. 8 \times ()=64
49. 8 \times 9=()
50. () \times 9=36
51. () \times 12=12
52. 3 \times 8=()
53. 9 \times 11=()
54. 2 \times 6=()
55. 6 \times ()=60
56. 1 \times 5=()
57. 9 \times ()=108
58. 4 \times ()=44
59. 2 \times ()=18
60. 8 \times ()=64
61. () \times 12=144
62. () \times 9=18
63. 5 \times 12=()
64. 4 \times 5=()
65. 6 \times ()=36
66. () \times 12=84
67. () \times 4=12
68. 8 \times ()=80
69. () \times 5=20
70. 6 \times ()=42
71. 3 \times ()=24
72. () \times 12=24
73. 6 \times ()=72
74. 8 \times ()=64
75. 9 \times ()=108
76. () \times 12=60
77. 7 \times 7=()
78. () \times 12=60
79. () \times 8=40
80. () \times 3=9
81. 5 \times 12=()
82. 4 \times 8=()
83. 4 \times ()=48
84. 6 \times 12=()
85. 11 \times ()=132
86. 5 \times ()=45
87. 5 \times ()=30
88. 4 \times ()=36
89. 6 \times ()=54
90. 6 \times 10=()
91. 9 \times ()=90
92. 2 \times 8=()
93. 7 \times ()=77
94. 8 \times ()=96
95. 3 \times 6=()
96. 1 \times ()=12
97. () \times 12=72
98. 11 \times ()=132
99. 4 \times 12=()
100. () \times 3=6

Times Table Practice

Answers

1. 6
2. 64
3. 2
4. 12
5. 11
6. 3
7. 72
8. 3
9. 72
10. 5
11. 7
12. 40
13. 7
14. 10
15. 14
16. 5
17. 100
18. 35
19. 9
20. 8
21. 9
22. 8
23. 5
24. 36
25. 81
26. 36
27. 32
28. 3
29. 4
30. 4
31. 4
32. 1
33. 20
34. 66
35. 6
36. 42
37. 10
38. 12
39. 10
40. 6
41. 7
42. 12
43. 99
44. 4
45. 2
46. 24
47. 108
48. 8
49. 72
50. 2
51. 1
52. 24
53. 99
54. 12
55. 10
56. 5
57. 12
58. 11
59. 9
60. 8
61. 12
62. 2
63. 60
64. 20
65. 6
66. 7
67. 3
68. 10
69. 4
70. 7
71. 8
72. 2
73. 12
74. 8
75. 12
76. 5
77. 49
78. 5
79. 5
80. 3
81. 60
82. 32
83. 12
84. 72
85. 12
86. 9
87. 6
88. 9
89. 9
90. 60
91. 10
92. 16
93. 11
94. 12
95. 18
96. 12
97. 6
98. 12
99. 48
100. 2

C5 - 九九乘法口诀表

1. 二()十八	21. ()七四十二	41. 三()二十七	61. ()九五十四	81. 三()十八
2. 四()十六	22. 二()十二	42. 四六()	62. 三()十二	82. 三()二十四
3. 三()二十七	23. 三六()	43. 四四()	63. 六()四十二	83. 七九()
4. 九()八十一	24. 四五()	44. 三九()	64. 一九得()	84. ()九八十一
5. 二()十六	25. 二七()	45. 八()七十二	65. 二()十六	85. ()七十二
6. 六九()	26. 四()三十二	46. ()八六十四	66. ()七四十九	86. 二()十二
7. 四九()	27. ()三得六	47. 二三得()	67. 五九()	87. 七()五十六
8. 二七()	28. 二()十四	48. 二九()	68. 五六()	88. 二八()
9. 九九()	29. 三()十八	49. 三四()	69. 六八()	89. ()八五十六
10. 六()四十二	30. 三()二十四	50. 五()四十	70. ()八三十二	90. ()九六十三
11. 四四()	31. 三六()	51. 九九()	71. ()六二十四	91. ()七四十二
12. 三六()	32. 七()六十三	52. 八()六十四	72. 三九()	92. 二八()
13. 四()三十六	33. 五五()	53. ()九十八	73. ()六二十四	93. ()九三十六
14. 三三得()	34. ()九三十六	54. 六()四十八	74. 六()四十二	94. 二五()
15. 七九()	35. 二六()	55. 六八()	75. 一()得三	95. 三()二十一
16. ()九五十四	36. 一()得四	56. 二()十六	76. 六九()	96. 五九()
17. 一()得七	37. 二九()	57. ()五十五	77. 八八()	97. 四()三十二
18. 五()三十五	38. ()八四十八	58. 二()得八	78. 八()六十四	98. 三八()
19. ()三得六	39. 三六()	59. 六九()	79. 七()五十六	99. ()九四十五
20. ()九十八	40. 五()二十五	60. 九九()	80. 五()四十五	100. ()九三十六

C5 - 九九乘法口诀表

1. 九	21. 六	41. 九	61. 六	81. 六
2. 四	22. 六	42. 二十四	62. 四	82. 八
3. 九	23. 十八	43. 十六	63. 七	83. 六十三
4. 九	24. 二十	44. 二十七	64. 九	84. 九
5. 八	25. 十四	45. 九	65. 八	85. 三
6. 五十四	26. 八	46. 八	66. 七	86. 六
7. 三十六	27. 二	47. 六	67. 四十五	87. 八
8. 十四	28. 七	48. 十八	68. 三十	88. 十六
9. 八十一	29. 六	49. 十二	69. 四十八	89. 七
10. 七	30. 八	50. 八	70. 四	90. 七
11. 十六	31. 十八	51. 八十一	71. 四	91. 六
12. 十八	32. 九	52. 八	72. 二十七	92. 十六
13. 九	33. 二十五	53. 二	73. 四	93. 四
14. 九	34. 四	54. 八	74. 七	94. 十
15. 六十三	35. 十二	55. 四十八	75. 三	95. 七
16. 六	36. 四	56. 八	76. 五十四	96. 四十五
17. 七	37. 十八	57. 三	77. 六十四	97. 八
18. 七	38. 六	58. 四	78. 八	98. 二十四
19. 二	39. 十八	59. 五十四	79. 八	99. 五
20. 二	40. 五	60. 八十一	80. 九	100. 四

答案

Division with remainder

1. $17 \div () = 2r1$

21. $8 \div 7 = 1r()$

41. $17 \div 3 = 5r()$

61. $49 \div 5 = ()r4$

C1

2. $10 \div 2 = ()$

22. $() \div 9 = 8r7$

42. $() \div 7 = 8r1$

62. $24 \div 6 = ()$

C2

3. $4 \div 3 = 1r()$

23. $31 \div () = 5r1$

43. $() \div 9 = 3$

63. $() \div 8 = 8r1$

C3

4. $() \div 2 = 7r1$

24. $8 \div 5 = ()r3$

44. $32 \div 4 = ()$

64. $12 \div 2 = ()$

C4

5. $() \div 5 = 2r3$

25. $() \div 3 = 1r1$

45. $11 \div () = 3r2$

65. $() \div 1 = 6$

C5

6. $5 \div 4 = ()r1$

26. $() \div 3 = 2r1$

46. $22 \div 8 = 2r()$

66. $25 \div 3 = ()r1$

C6

7. $19 \div 4 = 4r()$

27. $30 \div () = 7r2$

47. $48 \div 5 = ()r3$

67. $() \div 6 = 8$

C7

8. $29 \div 5 = 5r()$

28. $58 \div () = 6r4$

48. $23 \div () = 5r3$

68. $9 \div 1 = ()$

C8

9. $57 \div 8 = 7r()$

29. $17 \div () = 4r1$

49. $37 \div () = 4r5$

69. $28 \div 9 = 3r()$

C9

10. $14 \div 3 = ()r2$

30. $79 \div 8 = 9r()$

50. $30 \div () = 3r6$

70. $() \div 2 = 5$

C10

11. $57 \div () = 9r3$

31. $18 \div 4 = 4r()$

51. $15 \div () = 2r3$

71. $3 \div 2 = 1r()$

C11

12. $46 \div () = 7r4$

32. $27 \div () = 4r3$

52. $() \div 4 = 1r2$

72. $12 \div 4 = ()$

C12

13. $71 \div 8 = 8r()$

33. $3 \div () = 3$

53. $11 \div () = 2r1$

73. $12 \div 6 = ()$

NAV

14. $39 \div 6 = ()r3$

34. $3 \div 1 = ()$

54. $26 \div 9 = 2r()$

74. $16 \div 4 = ()$

A

15. $5 \div 1 = ()$

35. $15 \div () = 1r6$

55. $36 \div 5 = ()r1$

75. $17 \div 2 = 8r()$

B

16. $8 \div 7 = 1r()$

36. $3 \div 1 = ()$

56. $12 \div 2 = ()$

76. $32 \div () = 4r4$

D

17. $16 \div 9 = 1r()$

37. $12 \div 5 = 2r()$

57. $26 \div () = 8r2$

77. $4 \div 3 = ()r1$

E

18. $25 \div 9 = ()r7$

38. $21 \div 5 = 4r()$

58. $() \div 5 = 8$

78. $12 \div () = 1r5$

F

19. $4 \div () = 1r1$

39. $() \div 2 = 4$

59. $() \div 5 = 8r1$

79. $37 \div 4 = ()r1$

20. $() \div 9 = 5r5$

40. $39 \div 6 = 6r()$

60. $30 \div () = 5$

80. $33 \div () = 4r1$

Division with remainder

1. $36 \div 3 = ()$	21. $63 \div () = 9$	41. $125 \div 10 = () r5$	61. $49 \div 11 = () r5$	C1
2. $() \div 6 = 10 r2$	22. $58 \div 6 = () r4$	42. $4 \div () = 2$	62. $() \div 11 = 6 r5$	C2
3. $41 \div 4 = () r1$	23. $46 \div () = 3 r10$	43. $28 \div 9 = 3 r()$	63. $10 \div 1 = ()$	C3
4. $9 \div 7 = 1 r()$	24. $4 \div 1 = ()$	44. $19 \div 5 = 3 r()$	64. $19 \div 9 = 2 r()$	C4
5. $16 \div 4 = ()$	25. $96 \div 8 = ()$	45. $() \div 11 = 1 r1$	65. $31 \div () = 10 r1$	C5
6. $46 \div () = 5 r1$	26. $56 \div 11 = 5 r()$	46. $35 \div 3 = () r2$	66. $77 \div () = 9 r5$	C6
7. $22 \div 3 = () r1$	27. $29 \div 11 = () r7$	47. $25 \div 11 = 2 r()$	67. $58 \div 9 = () r4$	C7
8. $() \div 11 = 7 r3$	28. $73 \div 9 = 8 r()$	48. $46 \div () = 7 r4$	68. $127 \div 11 = () r6$	C8
9. $50 \div 7 = () r1$	29. $() \div 4 = 2 r1$	49. $18 \div 2 = ()$	69. $() \div 9 = 2 r5$	C9
10. $() \div 8 = 1 r6$	30. $19 \div () = 3 r4$	50. $() \div 4 = 3 r1$	70. $61 \div () = 5 r1$	C10
11. $90 \div 10 = ()$	31. $63 \div () = 9$	51. $100 \div 9 = 11 r()$	71. $() \div 7 = 9 r5$	C11
12. $56 \div 9 = 6 r()$	32. $100 \div () = 9 r1$	52. $51 \div 6 = 8 r()$	72. $() \div 2 = 1$	C12
13. $37 \div () = 5 r2$	33. $31 \div 6 = () r1$	53. $27 \div () = 9$	73. $() \div 9 = 10$	NAV
14. $41 \div 7 = () r6$	34. $7 \div () = 1 r3$	54. $18 \div 3 = ()$	74. $46 \div 9 = 5 r()$	A
15. $() \div 1 = 2$	35. $43 \div 7 = () r1$	55. $103 \div 10 = 10 r()$	75. $32 \div 4 = ()$	B
16. $() \div 2 = 3 r1$	36. $23 \div 9 = () r5$	56. $() \div 12 = 4 r10$	76. $79 \div () = 8 r7$	D
17. $19 \div 3 = 6 r()$	37. $11 \div 1 = ()$	57. $() \div 2 = 5 r1$	77. $22 \div () = 5 r2$	E
18. $() \div 9 = 4$	38. $4 \div 1 = ()$	58. $33 \div 5 = () r3$	78. $36 \div () = 12$	F
19. $5 \div 1 = ()$	39. $() \div 11 = 11 r6$	59. $45 \div 4 = 11 r()$	79. $() \div 10 = 10 r8$	
20. $25 \div () = 3 r1$	40. $36 \div 7 = () r1$	60. $46 \div () = 11 r2$	80. $7 \div 3 = () r1$	

C8 - Mental Arithmetic - 连乘				Answers	C8 - Mental Arithmetic - 连乘				
1 . 4×1×7=	26 . 1×2×1=	51 . 4×3×5=	76 . 5×5×4=	1 . 28	26 . 2	51 . 60	76 . 100		C1
2 . 8×7×6=	27 . 2×8×3=	52 . 3×9×9=	77 . 1×5×5=	2 . 336	27 . 48	52 . 243	77 . 25		C2
3 . 5×9×5=	28 . 3×9×2=	53 . 4×7×7=	78 . 5×9×3=	3 . 225	28 . 54	53 . 196	78 . 135		C3
4 . 9×9×5=	29 . 1×3×6=	54 . 1×5×7=	79 . 2×7×2=	4 . 405	29 . 18	54 . 35	79 . 28		C4
5 . 9×8×1=	30 . 1×3×3=	55 . 3×4×9=	80 . 4×6×6=	5 . 72	30 . 9	55 . 108	80 . 144		C5
6 . 7×4×8=	31 . 2×6×2=	56 . 4×9×9=	81 . 1×1×6=	6 . 224	31 . 24	56 . 324	81 . 6		C6
7 . 5×4×5=	32 . 9×2×7=	57 . 5×2×6=	82 . 2×7×9=	7 . 100	32 . 126	57 . 60	82 . 126		C7
8 . 4×6×7=	33 . 8×6×9=	58 . 7×4×5=	83 . 5×9×7=	8 . 168	33 . 432	58 . 140	83 . 315		C8
9 . 2×8×7=	34 . 2×4×4=	59 . 1×6×4=	84 . 8×9×2=	9 . 112	34 . 32	59 . 24	84 . 144		C9
10 . 9×3×7=	35 . 4×1×1=	60 . 8×6×8=	85 . 1×2×6=	10 . 189	35 . 4	60 . 384	85 . 12		C10
11 . 7×6×2=	36 . 4×8×8=	61 . 6×4×2=	86 . 8×9×3=	11 . 84	36 . 256	61 . 48	86 . 216		C11
12 . 2×5×6=	37 . 1×9×4=	62 . 5×5×9=	87 . 6×9×2=	12 . 60	37 . 36	62 . 225	87 . 108		C12
13 . 9×2×3=	38 . 7×6×3=	63 . 2×6×9=	88 . 5×5×3=	13 . 54	38 . 126	63 . 108	88 . 75		NAV
14 . 1×6×9=	39 . 8×6×2=	64 . 1×9×3=	89 . 9×9×4=	14 . 54	39 . 96	64 . 27	89 . 324		A
15 . 7×4×4=	40 . 8×8×7=	65 . 1×6×7=	90 . 9×6×1=	15 . 112	40 . 448	65 . 42	90 . 54		B
16 . 5×9×8=	41 . 4×5×7=	66 . 9×6×2=	91 . 2×4×3=	16 . 360	41 . 140	66 . 108	91 . 24		D
17 . 3×2×1=	42 . 3×9×1=	67 . 6×7×2=	92 . 9×8×4=	17 . 6	42 . 27	67 . 84	92 . 288		E
18 . 9×6×4=	43 . 6×7×7=	68 . 1×1×6=	93 . 4×3×8=	18 . 216	43 . 294	68 . 6	93 . 96		F
19 . 8×6×7=	44 . 7×2×4=	69 . 3×3×4=	94 . 1×2×5=	19 . 336	44 . 56	69 . 36	94 . 10		
20 . 7×6×2=	45 . 5×8×2=	70 . 6×6×7=	95 . 4×3×3=	20 . 84	45 . 80	70 . 252	95 . 36		
21 . 6×7×6=	46 . 4×1×7=	71 . 6×1×3=	96 . 3×5×7=	21 . 252	46 . 28	71 . 18	96 . 105		
22 . 4×1×9=	47 . 6×5×5=	72 . 6×6×9=	97 . 2×7×8=	22 . 36	47 . 150	72 . 324	97 . 112		
23 . 5×2×9=	48 . 9×6×9=	73 . 4×1×7=	98 . 5×6×9=	23 . 90	48 . 486	73 . 28	98 . 270		
24 . 7×6×5=	49 . 9×5×5=	74 . 9×4×8=	99 . 3×3×5=	24 . 210	49 . 225	74 . 288	99 . 45		
25 . 2×4×2=	50 . 2×9×9=	75 . 7×7×4=	100 . 7×8×3=	25 . 16	50 . 162	75 . 196	100 . 168		

C9 - Mental Arithmetic - 连除

1. 180÷5÷3=	26. 420÷6÷7=	51. 5÷5÷1=	76. 108÷9÷12=
2. 396÷3÷12=	27. 720÷6÷10=	52. 20÷2÷5=	77. 98÷2÷7=
3. 192÷8÷4=	28. 105÷3÷7=	53. 30÷1÷3=	78. 30÷1÷6=
4. 540÷9÷6=	29. 288÷6÷8=	54. 378÷6÷9=	79. 392÷7÷8=
5. 126÷7÷9=	30. 40÷5÷4=	55. 18÷3÷2=	80. 54÷6÷9=
6. 385÷5÷7=	31. 150÷5÷3=	56. 144÷3÷6=	81. 60÷12÷5=
7. 288÷3÷8=	32. 99÷11÷3=	57. 144÷8÷6=	82. 270÷6÷5=
8. 180÷9÷10=	33. 36÷3÷2=	58. 288÷3÷12=	83. 640÷8÷8=
9. 396÷6÷11=	34. 100÷5÷2=	59. 168÷8÷3=	84. 480÷5÷8=
10. 448÷7÷8=	35. 1452÷12÷11=	60. 18÷3÷3=	85. 600÷6÷10=
11. 20÷1÷5=	36. 1188÷12÷9=	61. 90÷2÷5=	86. 240÷10÷8=
12. 12÷2÷1=	37. 63÷3÷7=	62. 200÷10÷4=	87. 162÷6÷9=
13. 12÷4÷1=	38. 198÷11÷3=	63. 480÷10÷4=	88. 132÷11÷6=
14. 18÷6÷1=	39. 48÷6÷4=	64. 9÷1÷1=	89. 324÷6÷9=
15. 36÷3÷4=	40. 700÷7÷10=	65. 720÷10÷12=	90. 1188÷11÷9=
16. 36÷2÷6=	41. 280÷10÷4=	66. 189÷7÷9=	91. 11÷11÷1=
17. 84÷12÷1=	42. 50÷2÷5=	67. 72÷12÷1=	92. 8÷2÷1=
18. 700÷10÷7=	43. 1320÷10÷11=	68. 100÷10÷2=	93. 1210÷11÷10=
19. 660÷6÷10=	44. 600÷10÷10=	69. 10÷2÷1=	94. 330÷11÷3=
20. 77÷11÷7=	45. 25÷1÷5=	70. 72÷9÷4=	95. 210÷7÷5=
21. 224÷7÷8=	46. 220÷11÷10=	71. 294÷7÷7=	96. 540÷5÷12=
22. 64÷2÷4=	47. 30÷5÷3=	72. 81÷1÷9=	97. 48÷4÷6=
23. 14÷2÷7=	48. 60÷1÷10=	73. 360÷4÷9=	98. 350÷5÷7=
24. 18÷6÷3=	49. 126÷6÷3=	74. 22÷1÷11=	99. 352÷8÷4=
25. 216÷3÷6=	50. 924÷7÷12=	75. 180÷2÷10=	100. 792÷11÷6=

C10 - Mental Arithmetic - 连乘除

1 .	70÷7×7=	26 .	5×3÷3=	51 .	10÷10×10=	76 .	3×21÷7=
2 .	8×24÷12=	27 .	4×54÷6=	52 .	8×10÷10=	77 .	2×1÷1=
3 .	88÷8×4=	28 .	30÷3×3=	53 .	2×10÷2=	78 .	8÷2×5=
4 .	9×20÷5=	29 .	24÷6×11=	54 .	3×40÷5=	79 .	2×80÷8=
5 .	8×77÷11=	30 .	1×49÷7=	55 .	6×88÷11=	80 .	8×21÷7=
6 .	12÷4×2=	31 .	72÷12×9=	56 .	2×96÷12=	81 .	7×16÷4=
7 .	33÷11×12=	32 .	5×8÷8=	57 .	60÷5×6=	82 .	6×24÷3=
8 .	24÷2×2=	33 .	63÷7×1=	58 .	10×18÷2=	83 .	6÷3×6=
9 .	5÷1×6=	34 .	6×11÷1=	59 .	9×24÷8=	84 .	7×14÷2=
10 .	8×49÷7=	35 .	11×45÷5=	60 .	21÷3×4=	85 .	30÷5×6=
11 .	8×121÷11=	36 .	55÷11×6=	61 .	54÷9×3=	86 .	4×20÷5=
12 .	9×8÷8=	37 .	24÷8×7=	62 .	1÷1×9=	87 .	7×12÷4=
13 .	45÷5×10=	38 .	36÷9×5=	63 .	1×27÷9=	88 .	35÷5×9=
14 .	12×72÷8=	39 .	42÷7×7=	64 .	4×99÷9=	89 .	24÷12×10=
15 .	3×28÷7=	40 .	4÷4×2=	65 .	108÷12×2=	90 .	10×88÷8=
16 .	72÷8×8=	41 .	36÷3×1=	66 .	3÷3×10=	91 .	24÷6×3=
17 .	22÷11×4=	42 .	144÷12×7=	67 .	96÷12×10=	92 .	5×45÷9=
18 .	9÷1×12=	43 .	132÷12×12=	68 .	2×32÷8=	93 .	28÷7×9=
19 .	1×48÷12=	44 .	10×35÷5=	69 .	10÷2×9=	94 .	1×90÷10=
20 .	9×15÷3=	45 .	9×81÷9=	70 .	18÷6×3=	95 .	1×44÷4=
21 .	12×30÷6=	46 .	12÷12×1=	71 .	40÷10×10=	96 .	6×70÷10=
22 .	4×35÷7=	47 .	12×28÷7=	72 .	11×42÷7=	97 .	1×24÷2=
23 .	144÷12×1=	48 .	72÷8×9=	73 .	5×120÷12=	98 .	6×50÷5=
24 .	2×20÷10=	49 .	9×108÷12=	74 .	9÷9×7=	99 .	66÷11×9=
25 .	9×54÷9=	50 .	8÷2×10=	75 .	100÷10×7=	100 .	6×2÷1=

C11-连乘或连除.pdf 2018/8/22 21:03:18 - 1 - ()

C11-Mental Arithmetic-连乘或连除

1. $7 \times 12 \times 12 =$

2. $3 \times 7 \times 12 =$

3. $72 \div 2 \div 4 =$

4. $12 \times 5 \times 2 =$

5. $3 \times 10 \times 9 =$

6. $1 \times 6 \times 11 =$

7. $120 \div 8 \div 3 =$

8. $9 \times 4 \times 12 =$

9. $150 \div 6 \div 5 =$

10. $3 \times 3 \times 4 =$

11. $2 \times 6 \times 6 =$

12. $10 \times 11 \times 2 =$

13. $72 \div 6 \div 1 =$

14. $5 \div 5 \div 1 =$

15. $1 \times 9 \times 3 =$

16. $450 \div 10 \div 5 =$

17. $224 \div 4 \div 8 =$

18. $3 \times 4 \times 2 =$

19. $10 \times 5 \times 5 =$

20. $2 \times 2 \times 7 =$

21. $495 \div 5 \div 11 =$

22. $11 \times 8 \times 5 =$

23. $7 \times 5 \times 5 =$

24. $165 \div 5 \div 3 =$

25. $288 \div 12 \div 6 =$

26. $55 \div 1 \div 5 =$

27. $63 \div 3 \div 3 =$

28. $6 \times 2 \times 9 =$

29. $660 \div 11 \div 12 =$

30. $3 \times 12 \times 4 =$

31. $1 \times 6 \times 5 =$

32. $80 \div 4 \div 4 =$

33. $504 \div 7 \div 9 =$

34. $72 \div 2 \div 12 =$

35. $2 \times 6 \times 7 =$

36. $48 \div 4 \div 12 =$

37. $7 \times 12 \times 10 =$

38. $2 \times 7 \times 3 =$

39. $320 \div 8 \div 5 =$

40. $9 \times 11 \times 10 =$

41. $100 \div 10 \div 1 =$

42. $9 \times 10 \times 6 =$

43. $1089 \div 11 \div 9 =$

44. $10 \times 11 \times 9 =$

45. $960 \div 8 \div 12 =$

46. $7 \times 12 \times 3 =$

47. $63 \div 1 \div 9 =$

48. $1 \times 10 \times 12 =$

49. $2 \times 11 \times 5 =$

50. $10 \times 9 \times 10 =$

51. $315 \div 5 \div 7 =$

52. $2 \times 3 \times 6 =$

53. $880 \div 8 \div 11 =$

54. $56 \div 2 \div 7 =$

55. $16 \div 1 \div 8 =$

56. $396 \div 11 \div 12 =$

57. $144 \div 3 \div 8 =$

58. $4 \times 10 \times 6 =$

59. $252 \div 7 \div 9 =$

60. $1 \times 3 \times 2 =$

61. $144 \div 4 \div 12 =$

62. $2 \times 9 \times 12 =$

63. $3 \times 6 \times 5 =$

64. $484 \div 11 \div 4 =$

65. $4 \times 8 \times 5 =$

66. $264 \div 11 \div 4 =$

67. $12 \times 12 \times 2 =$

68. $11 \times 2 \times 12 =$

69. $176 \div 4 \div 11 =$

70. $112 \div 2 \div 7 =$

71. $216 \div 6 \div 3 =$

72. $704 \div 8 \div 8 =$

73. $320 \div 8 \div 10 =$

74. $8 \times 8 \times 8 =$

75. $2 \times 7 \times 11 =$

76. $11 \times 4 \times 12 =$

77. $108 \div 2 \div 9 =$

78. $36 \div 3 \div 2 =$

79. $4 \times 12 \times 10 =$

80. $12 \times 2 \times 9 =$

81. $1188 \div 12 \div 11 =$

82. $847 \div 7 \div 11 =$

83. $60 \div 5 \div 2 =$

84. $32 \div 1 \div 8 =$

85. $25 \div 5 \div 1 =$

86. $5 \times 4 \times 8 =$

87. $360 \div 4 \div 10 =$

88. $320 \div 8 \div 4 =$

89. $40 \div 5 \div 4 =$

90. $1 \times 6 \times 11 =$

91. $2 \times 10 \times 8 =$

92. $891 \div 11 \div 9 =$

93. $660 \div 12 \div 11 =$

94. $5 \times 1 \times 5 =$

95. $480 \div 4 \div 12 =$

96. $2 \times 1 \times 7 =$

97. $360 \div 6 \div 5 =$

98. $1 \times 8 \times 2 =$

99. $4 \times 3 \times 6 =$

100. $6 \times 12 \times 9 =$
- C11-连乘或连除.pdf 2018/8/22 21:03:18 - 2 - ()
- Answers
- C11-Mental Arithmetic-连乘或连除
1. 1008

2. 252

3. 9

4. 120

5. 270

6. 66

7. 5

8. 432

9. 5

10. 36

11. 72

12. 220

13. 12

14. 1

15. 27

16. 9

17. 7

18. 24

19. 250

20. 28

21. 9

22. 440

23. 175

24. 11

25. 4

26. 11

27. 7

28. 108

29. 5

30. 144

31. 30

32. 5

33. 8

34. 3

35. 84

36. 1

37. 840

38. 42

39. 8

40. 990

41. 10

42. 540

43. 11

44. 990

45. 10

46. 252

47. 7

48. 120

49. 110

50. 900

51. 9

52. 36

53. 10

54. 4

55. 2

56. 3

57. 6

58. 240

59. 4

60. 6

61. 3

62. 216

63. 90

64. 11

65. 160

66. 6

67. 288

68. 264

69. 4

70. 8

71. 12

72. 11

73. 4

74. 512

75. 154

76. 528

77. 6

78. 6

79. 480

80. 216

81. 9

82. 11

83. 6

84. 4

85. 5

86. 160

87. 9

88. 10

89. 2

90. 66

91. 160

92. 9

93. 5

94. 25

95. 10

96. 14

97. 12

98. 16

99. 72

100. 648
- C1
- C2
- C3
- C4
- C5
- C6
- C7
- C8
- C9
- C10
- C11
- C12
- NAV
- A
- B
- D
- E
- F

C12-Mental Arithmetic-乘除混合题

- 1 . 6×3×3=

26 . 8×18÷2=

51 . 180÷5÷6=

76 . 32÷8×11=
- 2 . 10×72÷9=

27 . 60÷6×2=

52 . 128÷2÷8=

77 . 100÷10÷2=
- 3 . 48÷8×7=

28 . 9×10×11=

53 . 8×10×4=

78 . 2×56÷8=
- 4 . 6÷6×1=

29 . 512÷8÷8=

54 . 198÷9÷11=

79 . 60÷12×11=
- 5 . 28÷4÷7=

30 . 55÷5÷1=

55 . 12×54÷9=

80 . 48÷3÷4=
- 6 . 2×2×3=

31 . 7×3×3=

56 . 6×22÷11=

81 . 108÷3÷12=
- 7 . 128÷8÷2=

32 . 56÷8×3=

57 . 28÷7÷1=

82 . 504÷6÷12=
- 8 . 5×6÷1=

33 . 4×9÷3=

58 . 2×120÷10=

83 . 9×6÷2=
- 9 . 4×70÷10=

34 . 12÷6×1=

59 . 3×3×7=

84 . 40÷4×1=
- 10 . 7×55÷5=

35 . 48÷6÷1=

60 . 24÷4×11=

85 . 12×72÷9=
- 11 . 9×4÷4=

36 . 9×4×9=

61 . 10×16÷4=

86 . 3×7×7=
- 12 . 2×3×5=

37 . 6×7×11=

62 . 72÷9÷8=

87 . 2×9×2=
- 13 . 7×12÷1=

38 . 10÷2÷1=

63 . 7×4×4=

88 . 48÷4÷4=
- 14 . 90÷3÷10=

39 . 240÷8÷3=

64 . 264÷6÷11=

89 . 8×4×4=
- 15 . 7×10×11=

40 . 36÷12×8=

65 . 3×10×10=

90 . 49÷7×2=
- 16 . 5×8×9=

41 . 11×48÷12=

66 . 672÷8÷12=

91 . 10×15÷3=
- 17 . 270÷9÷6=

42 . 16÷8×7=

67 . 1×3×10=

92 . 10÷1÷2=
- 18 . 6÷6×8=

43 . 77÷11×7=

68 . 1×10×7=

93 . 8×60÷10=
- 19 . 5×24÷3=

44 . 11×6×1=

69 . 128÷4÷8=

94 . 3×2×11=
- 20 . 1×33÷3=

45 . 50÷10×10=

70 . 11×24÷6=

95 . 48÷6÷1=
- 21 . 48÷3÷4=

46 . 10×6÷2=

71 . 7×32÷8=

96 . 72÷12×1=
- 22 . 144÷3÷8=

47 . 11÷1÷11=

72 . 66÷11×6=

97 . 144÷12×11=
- 23 . 112÷2÷7=

48 . 12×9×3=

73 . 72÷6÷12=

98 . 32÷4÷8=
- 24 . 10×84÷12=

49 . 12×50÷5=

74 . 6×32÷8=

99 . 35÷7×2=
- 25 . 11×4×3=

50 . 5×11×6=

75 . 12÷4×2=

100 . 7×4×12=



第四章 Addition 加 & Subtraction 减 (with Number Bounds 凑整)

This Chapter focuses on operations with number bounds. All of which has the option for `maxval`.

D1	连加-后凑整	Addition only, number bounds in last two terms
D2	连加减-后减凑整	Addition then subtraction, number bounds in last two terms
D3	连加-随机凑整	Addition only, random number bounds
D4	连加减-随机凑整	Addition then subtraction, random number bounds
D5	后凑整组合	Grouping the last two terms (number bounds)
D6	随机凑整组合	Random number bounds
D7	随机连加	Random addition only
D8	随机连减	Random subtraction only
D9	随机连加减	Random addition and subtraction

This work is licensed under a [Creative Commons "Attribution-NonCommercial-NoDerivatives 4.0 International"](#) license.



D1 - Mental Arithmetic within 100 -连加-后凑整

1	25+57+3=	26	14+20+20=	51	28+22+18=	76	31+4+46=
2	16+11+19=	27	87+9+1=	52	68+14+6=	77	40+12+28=
3	33+20+40=	28	4+49+11=	53	89+1+9=	78	36+63+7=
4	81+11+9=	29	28+32+8=	54	72+9+1=	79	4+72+8=
5	81+6+4=	30	73+26+4=	55	86+11+9=	80	72+0+10=
6	11+71+9=	31	23+40+20=	56	36+31+9=	81	13+68+2=
7	55+32+8=	32	57+10+20=	57	66+3+7=	82	71+4+6=
8	48+14+26=	33	53+30+10=	58	25+26+14=	83	78+2+8=
9	36+4+46=	34	12+10+10=	59	41+22+18=	84	43+53+7=
10	80+10+10=	35	43+16+24=	60	64+23+7=	85	17+42+18=
11	34+56+4=	36	6+2+48=	61	10+60+20=	86	27+60+10=
12	73+9+1=	37	5+18+42=	62	63+13+17=	87	23+76+4=
13	32+59+1=	38	79+10+10=	63	6+32+38=	88	17+71+9=
14	13+46+24=	39	80+4+6=	64	68+19+1=	89	30+45+5=
15	50+26+4=	40	67+16+4=	65	16+63+7=	90	84+0+10=
16	18+63+7=	41	32+50+10=	66	53+39+1=	91	1+35+35=
17	81+15+5=	42	55+29+1=	67	20+48+12=	92	77+12+8=
18	61+28+2=	43	62+21+9=	68	23+31+9=	93	52+24+6=
19	75+19+1=	44	59+25+5=	69	13+86+4=	94	48+16+24=
20	21+54+6=	45	19+6+64=	70	83+7+3=	95	8+58+12=
21	6+73+7=	46	63+9+1=	71	31+39+1=	96	50+20+10=
22	58+23+7=	47	38+27+23=	72	27+63+7=	97	42+50+10=
23	50+27+3=	48	26+68+2=	73	8+65+15=	98	37+39+1=
24	1+2+8=	49	82+15+5=	74	89+1+9=	99	39+44+6=
25	88+4+6=	50	88+4+6=	75	75+10+10=	100	54+15+5=

D1
D2
D3
D4
D5
D6
D7
D8
D9
NAV
A
B
C
E
F

D2 - Mental Arithmetic within 500 -连加減-后減湊整

1	427+54-44=	26	274+105-95=	51	13+300-290=	76	331+82-72=
2	455+47-37=	27	297+32-22=	52	204+71-61=	77	233+153-143=
3	377+53-43=	28	369+10-0=	53	277+118-108=	78	322+140-70=
4	396+43-33=	29	210+171-51=	54	400+57-47=	79	103+118-108=
5	441+64-34=	30	240+43-33=	55	485+16-6=	80	53+106-96=
6	10+133-123=	31	204+76-66=	56	76+388-258=	81	414+19-9=
7	460+26-16=	32	268+57-47=	57	28+198-198=	82	436+27-17=
8	65+417-257=	33	287+133-123=	58	338+128-108=	83	375+132-122=
9	207+290-140=	34	336+102-92=	59	377+117-107=	84	394+12-2=
10	367+130-120=	35	160+179-159=	60	491+14-4=	85	9+167-157=
11	193+20-10=	36	23+420-260=	61	307+162-152=	86	318+132-122=
12	235+240-70=	37	18+325-315=	62	140+233-223=	87	474+20-10=
13	300+48-38=	38	50+161-151=	63	47+259-249=	88	261+28-18=
14	384+99-89=	39	88+229-219=	64	351+144-134=	89	187+201-1=
15	280+136-116=	40	186+201-21=	65	225+186-176=	90	16+34-24=
16	341+43-33=	41	323+126-116=	66	195+249-159=	91	409+94-54=
17	118+91-81=	42	414+35-35=	67	482+21-11=	92	214+24-14=
18	135+166-156=	43	436+59-49=	68	186+28-18=	93	277+95-15=
19	394+114-104=	44	239+188-178=	69	222+88-78=	94	489+12-2=
20	455+30-20=	45	104+221-31=	70	53+387-347=	95	303+159-119=
21	47+429-289=	46	372+94-84=	71	20+188-108=	96	467+21-11=
22	121+151-141=	47	244+77-67=	72	15+158-148=	97	244+220-210=
23	165+181-171=	48	351+28-18=	73	363+129-119=	98	339+164-154=
24	198+197-7=	49	315+128-118=	74	339+137-127=	99	353+23-13=
25	131+62-52=	50	257+66-26=	75	248+202-192=	100	488+10-0=

D3 - Mental Arithmetic within 100 -连加-随机凑整

1	29+42+18=	26	12+23+37=	51	7+79+1=	76	75+20+10=
2	7+67+13=	27	3+18+37=	52	26+42+14=	77	2+72+8=
3	29+18+32=	28	68+2+8=	53	7+58+12=	78	33+9+41=
4	72+20+10=	29	50+7+23=	54	64+10+10=	79	67+8+12=
5	78+12+8=	30	46+28+12=	55	41+27+13=	80	55+43+7=
6	1+63+7=	31	56+12+8=	56	74+8+2=	81	27+57+3=
7	26+26+24=	32	10+79+20=	57	9+34+31=	82	21+2+49=
8	15+5+75=	33	20+20+46=	58	10+10+86=	83	28+32+22=
9	18+72+0=	34	32+38+19=	59	68+2+9=	84	4+6+64=
10	89+1+5=	35	68+2+2=	60	41+19+35=	85	61+19+14=
11	16+4+70=	36	89+1+1=	61	13+17+66=	86	31+9+59=
12	23+17+49=	37	1+29+29=	62	7+3+86=	87	22+8+48=
13	46+12+18=	38	18+81+9=	63	40+55+5=	88	52+12+8=
14	18+49+11=	39	6+79+1=	64	6+76+4=	89	32+53+7=
15	14+6+75=	40	14+16+58=	65	24+26+7=	90	33+17+43=
16	8+77+12=	41	23+22+7=	66	36+0+4=	91	36+37+4=
17	32+22+18=	42	8+11+29=	67	53+29+1=	92	0+85+5=
18	27+64+6=	43	34+32+18=	68	18+8+22=	93	57+3+27=
19	64+6+35=	44	1+49+20=	69	10+10+67=	94	47+13+30=
20	11+9+70=	45	73+7+15=	70	6+4+17=	95	23+7+72=
21	86+5+5=	46	65+32+8=	71	76+9+1=	96	79+2+8=
22	48+8+12=	47	65+31+9=	72	36+33+7=	97	54+16+14=
23	0+50+20=	48	23+0+10=	73	84+6+4=	98	72+13+7=
24	5+72+8=	49	12+37+13=	74	20+70+10=	99	42+3+27=
25	69+1+30=	50	11+9+87=	75	1+29+62=	100	20+10+75=

D4 - Mental Arithmetic within 500 -连加減-随机凑整

1	144-61+131=	26	150-183+183=	51	417-69+79=	76	307-158+168=
2	235-83+93=	27	251-138+148=	52	80-14+374=	77	65-220+220=
3	296-100+110=	28	454-2+12=	53	11-1+246=	78	383-13+23=
4	68-93+223=	29	254+234-104=	54	88-256+416=	79	270-174+184=
5	416-23+63=	30	177-100+110=	55	33-23+441=	80	191-25+205=
6	479-6+16=	31	475-18+28=	56	38-143+153=	81	189-67+287=
7	376-45+65=	32	20-451+461=	57	13-353+363=	82	402-24+34=
8	275-143+153=	33	333-97+107=	58	200-206+216=	83	234-138+148=
9	51+448-41=	34	209-219+229=	59	201-15+215=	84	216-174+184=
10	27+206-17=	35	292-194+204=	60	214-112+122=	85	209+278-199=
11	259+215-259=	36	110-0+325=	61	76-97+107=	86	245-68+78=
12	42+435-32=	37	120-2+12=	62	252-75+85=	87	491-4+14=
13	116-54+64=	38	235-105+234=	63	77-22+32=	88	109-42+52=
14	95-85+320=	39	120-69+79=	64	177-0+10=	89	413-43+83=
15	63-203+213=	40	268-16+26=	65	99-133+143=	90	80-8+38=
16	490-8+18=	41	61-31+432=	66	283-112+122=	91	286-276+176=
17	132-65+85=	42	189-264+274=	67	207-79+299=	92	137-311+321=
18	102-272+312=	43	19-9+381=	68	407-41+51=	93	2-168+178=
19	419-37+47=	44	25-13+23=	69	389-48+58=	94	426-18+28=
20	378-82+92=	45	171+218-131=	70	390-36+46=	95	288-61+71=
21	101-94+184=	46	46+429-339=	71	167-5+115=	96	152-24+194=
22	6-171+181=	47	389-93+103=	72	372-76+86=	97	185-202+212=
23	182-124+144=	48	227-142+152=	73	297-75+185=	98	478-7+17=
24	73-82+172=	49	200-150+160=	74	82-416+426=	99	201-102+112=
25	213-113+123=	50	12-2+400=	75	11-201+211=	100	456-43+53=

D5 - Mental Arithmetic within 100 -后凑整组合

1	50+6+24=	26	22+15-5=	51	61+27+3=	76	61+19+1=
2	51+5+35=	27	72+16-6=	52	73+11+9=	77	60+12+18=
3	10+26-26=	28	26+81-1=	53	54+20+20=	78	72+5+15=
4	68+15+5=	29	55+21-11=	54	53+15+15=	79	63+17+3=
5	51+58-8=	30	29+67+3=	55	84+10+10=	80	74+8+2=
6	59+18+12=	31	57+19+1=	56	39+20+30=	81	78+14+6=
7	70+29+1=	32	47+43-23=	57	85+0+10=	82	21+31+29=
8	38+61-51=	33	61+15-5=	58	55+7+23=	83	0+34+16=
9	86+9+1=	34	67+4+6=	59	58+18+2=	84	38+61+9=
10	45+31+9=	35	18+23+27=	60	27+20+40=	85	67+30+10=
11	68+18+2=	36	22+72-72=	61	50+22+8=	86	49+36+4=
12	1+81-11=	37	81+15+5=	62	29+16+34=	87	89+8+2=
13	22+61-31=	38	35+37+3=	63	68+27+3=	88	88+10+10=
14	39+51-21=	39	39+20-10=	64	86+2+8=	89	61+24+6=
15	32+31-21=	40	55+33+7=	65	47+16+4=	90	43+56+4=
16	53+18+2=	41	54+17-7=	66	13+58+12=	91	81+0+10=
17	75+14-14=	42	50+59-49=	67	11+37+3=	92	84+10+10=
18	98+10-0=	43	88+16-6=	68	85+3+7=	93	84+5+5=
19	94+12-2=	44	18+5+5=	69	25+72+8=	94	75+5+5=
20	39+26-16=	45	82+27-7=	70	29+11+39=	95	77+16+4=
21	26+72+8=	46	24+34+16=	71	60+4+26=	96	10+70+10=
22	12+20-10=	47	10+74+6=	72	46+34+6=	97	13+24+26=
23	61+14+6=	48	49+21-11=	73	85+4+6=	98	51+18+2=
24	6+2+38=	49	19+14+6=	74	27+68+2=	99	64+7+13=
25	74+9+1=	50	40+62-12=	75	86+6+4=	100	58+37+3=

D6 - Mental Arithmetic within 500 - 随机凑整组合

1	62+335+68=	26	18+41+302=	51	37+230+13=	76	150+122+110=
2	303+192+8=	27	372-44+54=	52	440+38+2=	77	431+64+6=
3	241-231+156=	28	342-40+50=	53	40+170+160=	78	38+440+2=
4	30+402+0=	29	147-291+361=	54	180+144+110=	79	242+55+148=
5	124-1+11=	30	18+299+162=	55	106+127+124=	80	62+15+78=
6	38-125+175=	31	138-56+166=	56	108+114+112=	81	2+365+128=
7	28+383+62=	32	5+220+255=	57	167+90+63=	82	38+248+172=
8	332+2+138=	33	190+15+175=	58	75+35+355=	83	412+84+6=
9	36+248+74=	34	116-16+143=	59	162+51+268=	84	8+383+102=
10	168-75+85=	35	425-24+24=	60	145+253+75=	85	91+146+119=
11	4+441+56=	36	74+136+256=	61	12+263+208=	86	11+417+29=
12	4+304+186=	37	43-68+78=	62	8+195+292=	87	72+139+88=
13	410-76+86=	38	38+427+2=	63	4+429+66=	88	30+275+110=
14	242+35+8=	39	31+8+249=	64	7+446+53=	89	26+359+74=
15	293-125+135=	40	297-76+86=	65	67+28+83=	90	2+419+68=
16	208-89+99=	41	445-24+24=	66	39+287+101=	91	10+329+140=
17	60+312+10=	42	88-37+47=	67	30+390+60=	92	6+10+474=
18	26+422+34=	43	84-114+124=	68	180+185+30=	93	56+210+144=
19	112-225+325=	44	56+145+184=	69	2+441+58=	94	10+368+50=
20	305-56+66=	45	182+241+28=	70	7+273+203=	95	282+83+58=
21	30+245-20=	46	126-372+382=	71	151+18+119=	96	183+101+167=
22	482-7+17=	47	285-183+193=	72	4+288+206=	97	123+21+267=
23	75-103+113=	48	21+297+119=	73	143+288+7=	98	261+114+49=
24	388-7+97=	49	20+377+90=	74	108+206+142=	99	33+70+347=
25	116+246+104=	50	165-145+155=	75	111+236+59=	100	87+165+213=

D7 - Mental Arithmetic within 100 -随机连加				Answer	D7 - Mental Arithmetic within 100 -随机连加				
171+17+0=	2689+10+0=	5185+9+2=	7614+70+2=	188	2699	5196	7686	D1	
265+33+1=	2749+21+21=	5278+3+4=	7781+2+9=	299	2791	5285	7792	D2	
355+17+3=	2853+26+13=	5377+4+3=	7837+6+15=	375	2892	5384	7858	D3	
44+53+10=	2958+9+23=	5425+73+0=	7923+53+1=	467	2990	5498	7977	D4	
55+6+13=	3014+13+12=	5539+53+0=	8046+46+6=	574	3039	5592	8098	D5	
619+7+65=	3177+17+4=	5685+6+1=	8147+32+15=	691	3198	5692	8194	D6	
735+24+14=	3244+42+9=	5750+14+24=	8240+31+22=	773	3295	5788	8293	D7	
814+73+5=	3387+2+0=	5834+62+3=	8342+36+1=	892	3389	5899	8379	D8	
931+47+1=	3432+48+11=	5929+10+39=	8459+25+14=	979	3491	5978	8498	D9	
1064+19+11=	3524+34+40=	6078+12+2=	8524+59+10=	1094	3598	6092	8593	NAV	
1149+18+10=	363+23+31=	6152+31+2=	867+83+4=	1177	3657	6185	8694	A	
1283+4+9=	3763+7+20=	6283+14+0=	8763+17+17=	1296	3790	6297	8797	B	
1334+7+11=	3850+36+3=	6352+11+32=	8826+28+20=	1352	3889	6395	8874	C	
1432+41+2=	3970+26+1=	6477+19+3=	8945+31+20=	1475	3997	6499	8996	E	
1547+44+1=	4016+9+12=	6550+34+5=	9048+32+7=	1592	4037	6589	9087	F	
1663+3+13=	4152+9+11=	6687+4+2=	9165+10+18=	1679	4172	6693	9193		
1722+62+7=	4242+22+12=	6731+39+4=	9212+1+28=	1791	4276	6774	9241		
1858+20+9=	430+17+74=	6823+14+44=	9372+1+18=	1887	4391	6881	9391		
1981+2+1=	4448+27+11=	6933+16+30=	9419+32+29=	1984	4486	6979	9480		
2024+4+22=	4545+31+13=	707+39+29=	9553+30+13=	2050	4589	7075	9596		
2117+4+47=	4682+2+10=	7180+3+13=	9676+12+4=	2168	4694	7196	9692		
2245+49+2=	4743+38+13=	7245+41+6=	975+54+22=	2296	4794	7292	9781		
2369+24+4=	4869+15+5=	7389+1+4=	9833+47+1=	2397	4889	7394	9881		
2450+39+7=	4961+2+22=	741+45+4=	9986+2+8=	2496	4985	7450	9996		
2563+14+20=	5024+24+6=	7586+8+1=	10089+9+0=	2597	5054	7595	10098		

D8 - Mental Arithmetic within 500 -随机连减

1	112-2-26=	26	197-130-23=	51	360-63-206=	76	186-28-38=
2	74-44-15=	27	177-25-122=	52	341-248-32=	77	158-52-30=
3	211-192-9=	28	406-46-181=	53	302-45-42=	78	178-93-61=
4	239-227-1=	29	85-51-20=	54	119-47-23=	79	203-145-33=
5	401-108-249=	30	379-53-237=	55	309-37-180=	80	134-24-69=
6	331-20-289=	31	266-44-160=	56	389-245-134=	81	289-209-25=
7	65-35-6=	32	324-227-45=	57	356-165-54=	82	361-40-282=
8	241-168-50=	33	147-139-4=	58	85-80-3=	83	271-93-131=
9	374-201-96=	34	249-205-23=	59	445-301-35=	84	184-80-64=
10	47-31-14=	35	344-70-268=	60	380-109-212=	85	189-139-43=
11	34-6-5=	36	117-104-3=	61	313-3-61=	86	245-104-10=
12	356-204-140=	37	40-17-20=	62	134-100-0=	87	117-20-93=
13	91-23-40=	38	270-17-158=	63	72-34-14=	88	353-209-10=
14	436-342-57=	39	405-306-15=	64	418-19-390=	89	73-41-4=
15	102-31-52=	40	288-7-278=	65	112-104-1=	90	234-145-53=
16	336-181-127=	41	118-47-12=	66	296-25-5=	91	336-163-163=
17	33-4-3=	42	305-21-112=	67	212-166-32=	92	308-278-27=
18	153-100-15=	43	4-3-0=	68	377-112-112=	93	188-182-0=
19	37-25-6=	44	77-43-6=	69	353-228-7=	94	389-183-166=
20	364-1-155=	45	213-201-0=	70	209-55-138=	95	206-102-21=
21	278-86-134=	46	409-355-8=	71	167-52-7=	96	244-50-167=
22	312-57-103=	47	338-208-102=	72	368-320-15=	97	184-125-5=
23	376-162-126=	48	99-57-2=	73	130-51-67=	98	330-109-126=
24	5-1-2=	49	303-283-11=	74	265-219-0=	99	226-134-12=
25	269-9-170=	50	426-174-118=	75	433-45-54=	100	219-87-39=

D9 - Mental Arithmetic within 100 -随机连加减

1	33+45-34=	26	19-2+60=	51	12-5+2=	76	72+16-74=
2	32-25+12=	27	58+5-34=	52	2+66-52=	77	79+0-62=
3	67-94+28=	28	36+17-16=	53	36-5+13=	78	8-69+64=
4	77+6-62=	29	48-33+14=	54	27-6+44=	79	46+21-32=
5	9+17-15=	30	50-26+7=	55	22-8+0=	80	69-23+1=
6	25+16-25=	31	81-37+18=	56	73-20+1=	81	53-39+34=
7	38-30+19=	32	63-43+22=	57	12-4+25=	82	15-11+0=
8	59+27-54=	33	14+27-12=	58	53-85+42=	83	32-14+20=
9	66-8+28=	34	82-78+11=	59	71+18-42=	84	20+79-48=
10	47+35-65=	35	23+28-27=	60	32+57-30=	85	23+21-25=
11	89+5-51=	36	40-72+56=	61	30-79+68=	86	78+4-76=
12	13+79-19=	37	58-36+36=	62	39+39-33=	87	38+61-80=
13	5+33-1=	38	14-7+3=	63	74+24-56=	88	2+64-56=
14	16+76-4=	39	12-82+77=	64	62+17-58=	89	0+20-10=
15	26+27-13=	40	18+4-20=	65	13-26+15=	90	23-34+28=
16	89-3+4=	41	37+29-58=	66	82+16-72=	91	41-89+54=
17	74-47+2=	42	35-31+19=	67	9+77-4=	92	81-63+18=
18	0+34-14=	43	21-19+40=	68	25-10+72=	93	32-40+30=
19	55-15+31=	44	14+30-26=	69	88+2-27=	94	47+47-1=
20	22-17+11=	45	41-16+9=	70	9-3+2=	95	76+8-77=
21	14+24-3=	46	24+21-19=	71	25-61+47=	96	30-28+15=
22	62-7+22=	47	28-25+44=	72	59-25+14=	97	54-32+15=
23	30-25+1=	48	72-48+21=	73	42-55+44=	98	73-26+25=
24	75+9-33=	49	40-7+4=	74	24+28-34=	99	65+20-73=
25	77+5-58=	50	54-42+1=	75	24+20-25=	100	40-8+9=

第五章 Addition 加 & Subtraction 减 (with Brackets 括号)

This Chapter focuses on operations with brackets. All of which has the option for `maxval`.

E1	随机连加减	Random addition and subtraction
E2	减连括号	Subtraction with brackets
E3	连加减混合括号	Random addition and subtraction with brackets

This work is licensed under a [Creative Commons "Attribution-NonCommercial-NoDerivatives 4.0 International"](#) license.



E1 - Mental Arithmetic within 300 - 随机连加减

1. $531-465+73=$ 26. $24-(22-11)=$ 51. $525-(405-45)=$
2. $407-583+271=$ 27. $754-380+72=$ 52. $747+21-705=$
3. $2-(1-1)=$ 28. $341-(72-52)=$ 53. $156-(152+1)=$
4. $744+91-761=$ 29. $749-0+87=$ 54. $366-(92-60)=$
5. $62-(15-10)=$ 30. $363-(90+63)=$ 55. $560-115+280=$
6. $507+242-374=$ 31. $464-104+162=$ 56. $680-357+58=$
7. $0-(0-0)=$ 32. $780-(157-94)=$ 57. $436-440+362=$
8. $390-(91-84)=$ 33. $10-(5-1)=$ 58. $623-(427-410)=$
9. $842-(427+376)=$ 34. $233-(99+46)=$ 59. $617+20-95=$
10. $232-(5-2)=$ 35. $179-122+197=$ 60. $306-107+100=$
11. $505-496+310=$ 36. $244-(166-164)=$ 61. $54+199-138=$
12. $421-(169+105)=$ 37. $236-(30-28)=$ 62. $317+56-329=$
13. $156+431-332=$ 38. $661-(460+134)=$ 63. $365-(136-49)=$
14. $463+218-515=$ 39. $326-604+439=$ 64. $477-407+33=$
15. $151-(53+1)=$ 40. $438-(224-150)=$ 65. $781-(135-95)=$
16. $256-44+320=$ 41. $207+103-178=$ 66. $698-(352+339)=$
17. $831-(59-39)=$ 42. $316-(37+50)=$ 67. $837-(474+313)=$
18. $229+361-208=$ 43. $133-(7+56)=$ 68. $458-(16+88)=$
19. $300-(213-76)=$ 44. $235-(168+6)=$ 69. $381-707+403=$
20. $353-(238-233)=$ 45. $344+69-152=$ 70. $403-(62-6)=$
21. $52+506-545=$ 46. $496-475+107=$ 71. $627+86-339=$
22. $218-(19+190)=$ 47. $696-(338+3)=$ 72. $566+37-546=$
23. $694-(693+1)=$ 48. $119-(98-6)=$ 73. $411-(253-91)=$
24. $430-176+182=$ 49. $693-258+37=$ 74. $308-(42+47)=$
25. $416-(357+26)=$ 50. $751-(604+1)=$ 75. $231-152+121=$

E2 - Mental Arithmeitc within 500 -减连括号			Answer	E2 - Mental Arithmeitc within 500 -减连括号			
1. 361-(247-181)=	26. 45-(38+2)=	51. 136-(52+28)=	1. 295	26. 5	51. 56		
2. 165-(144-88)=	27. 797-41+31=	52. 807-(192-30)=	2. 109	27. 787	52. 645		
3. 595-(42-22)=	28. 212-(131-69)=	53. 402+66-376=	3. 575	28. 150	53. 92		
4. 421-(81-13)=	29. 616-(594+21)=	54. 334+286-338=	4. 353	29. 1	54. 282		
5. 343-154+61=	30. 753-(190-156)=	55. 451+204-283=	5. 250	30. 719	55. 372		
6. 571-500+38=	31. 669-522+158=	56. 70-45+25=	6. 109	31. 305	56. 50		E1
7. 204+127-191=	32. 113+666-177=	57. 6+243-74=	7. 140	32. 602	57. 175		E2
8. 541+74-24=	33. 636+200-209=	58. 804-(306-190)=	8. 591	33. 627	58. 688		E3
9. 795-(140+592)=	34. 768-(644+120)=	59. 604+68-399=	9. 63	34. 4	59. 273		
10. 714-503+58=	35. 143-(79+55)=	60. 438-495+405=	10. 269	35. 9	60. 348		NAV
11. 128-(7+57)=	36. 768-471+14=	61. 758-(440+62)=	11. 64	36. 311	61. 256		
12. 78-(4-2)=	37. 365-31+211=	62. 215-(119+54)=	12. 76	37. 545	62. 42		A
13. 47-(5+23)=	38. 148-20+267=	63. 670-(157+395)=	13. 19	38. 395	63. 118		B
14. 508-(36-10)=	39. 104-(18-8)=	64. 4+318-175=	14. 482	39. 94	64. 147		
15. 345-(298-208)=	40. 567-126+49=	65. 586-(191-15)=	15. 255	40. 490	65. 410		C
16. 545-(76+372)=	41. 432-403+124=	66. 60+505-444=	16. 97	41. 153	66. 121		D
17. 521+87-599=	42. 108-15+440=	67. 218-105+2=	17. 9	42. 533	67. 115		
18. 645-(366+278)=	43. 654+25-670=	68. 375+325-307=	18. 1	43. 9	68. 393		F
19. 371-(329-323)=	44. 190-(166+17)=	69. 766-(667+56)=	19. 365	44. 7	69. 43		
20. 694+34-605=	45. 172+76-71=	70. 743-(642+12)=	20. 123	45. 177	70. 89		
21. 571-(43-6)=	46. 196+238-199=	71. 711-506+95=	21. 534	46. 235	71. 300		
22. 12+464-299=	47. 481-432+125=	72. 684+22-115=	22. 177	47. 174	72. 591		
23. 220-504+360=	48. 286-394+199=	73. 40-(6-5)=	23. 76	48. 91	73. 39		
24. 325-286+4=	49. 815-(560-523)=	74. 460-(390-334)=	24. 43	49. 778	74. 404		
25. 808-(311+304)=	50. 592-229+55=	75. 586-(115-103)=	25. 193	50. 418	75. 574		

E3 - Mental Arithmetic within 1000 -连加减混合括号

- 1 . 424+290-380=

26 . 111-444+389=

51 . 414-299+22=
- 2 . 662+22-573=

27 . 297-(234+35)=

52 . 341+393-395=
- 3 . 563-506+105=

28 . 448+376-303=

53 . 627+141-329=
- 4 . 481-(209-141)=

29 . 442-(184-64)=

54 . 454-36+19=
- 5 . 516-(235-206)=

30 . 16-(2+11)=

55 . 454-(71+256)=
- 6 . 345+271-152=

31 . 548-(298+72)=

56 . 28+112-86=
- 7 . 592+8-58=

32 . 375-(115-45)=

57 . 767-(417+239)=
- 8 . 650-69+80=

33 . 562-59+136=

58 . 756+81-339=
- 9 . 218+20-198=

34 . 760-(594-462)=

59 . 535+57-314=
- 10 . 41-(19-9)=

35 . 119-679+669=

60 . 13-(6-1)=
- 11 . 230+224-328=

36 . 220-(41-31)=

61 . 630-235+129=
- 12 . 71-314+269=

37 . 361-(281-131)=

62 . 787-(504-100)=
- 13 . 665-(455-29)=

38 . 697-(492+100)=

63 . 190-(91+62)=
- 14 . 769+32-165=

39 . 637-495+100=

64 . 161-601+526=
- 15 . 123-73+324=

40 . 470-(72-23)=

65 . 596-252+241=
- 16 . 767-(248-26)=

41 . 109-361+292=

66 . 136-(7-4)=
- 17 . 750-(578-159)=

42 . 762-(233-16)=

67 . 434+4-48=
- 18 . 167-(128+26)=

43 . 520+296-692=

68 . 658-(122+495)=
- 19 . 104-(73+19)=

44 . 370-251+344=

69 . 226-5+599=
- 20 . 71-(7+1)=

45 . 344-125+47=

70 . 134+11-63=
- 21 . 332+328-22=

46 . 371-(25-2)=

71 . 471+111-123=
- 22 . 643-67+30=

47 . 231-(161-135)=

72 . 257-630+519=
- 23 . 60+220-10=

48 . 315-104+499=

73 . 18-(3-2)=
- 24 . 532-(20+154)=

49 . 717-667+60=

74 . 758-(363+177)=
- 25 . 486-468+311=

50 . 147-(90-55)=

75 . 58-(40+3)=

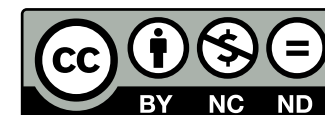


第六章 BIDMAS 四则运算

This Chapter focuses on BIDMAS operations. In China, we say 先(first)乘除 后(then)加减.

F1	乘法连加法	乘除在前	无括号	Multiplication then addition (no brackets)
F2	乘法连加法	乘除在前	有括号	Multiplication then addition (with brackets)
F3	乘法连加法	加减在前	无括号	Addition then multiplication (no brackets)
F4	乘法连加法	加减在前	有括号	Addition then multiplication (with brackets)
F5	乘法连减法	加减在前	无括号	Subtraction then multiplication (no brackets)
F6	乘法连减法	加减在前	随机括号	Subtraction then multiplication (random brackets)
F7	乘法连加减	加减在前	无括号	Addition/Subtraction then multiplication (no brackets)
F8	乘法连加减	加减在前	随机括号	Addition/Subtraction then multiplication (random brackets)
F9	乘法连加减	随机顺序	随机括号	Addition/Subtraction and multiplication (random brackets, random order)
F10	四则运算			BIDMAS

This work is licensed under a [Creative Commons "Attribution-NonCommercial-NoDerivatives 4.0 International"](#) license.





1	9×3+4=	26	5×9+53=	51	11×9+14=
2	10×2+81=	27	7×8+3=	52	4×12+10=
3	3×4+31=	28	9×10+14=	53	9×9+56=
4	12×12+0=	29	8×5+47=	54	5×10+48=
5	8×10+50=	30	5×6+7=	55	4×3+93=
6	10×5+27=	31	12×9+29=	56	11×5+32=
7	4×12+38=	32	6×2+17=	57	10×11+28=
8	3×3+114=	33	8×12+45=	58	6×4+104=
9	2×10+121=	34	7×5+1=	59	4×7+69=
10	12×6+3=	35	12×3+30=	60	12×12+0=
11	3×12+19=	36	3×4+48=	61	6×10+45=
12	5×7+10=	37	9×6+46=	62	7×3+13=
13	7×12+12=	38	11×6+41=	63	11×3+84=
14	3×11+84=	39	4×5+119=	64	8×7+27=
15	11×4+50=	40	7×11+47=	65	12×8+3=
16	4×5+100=	41	7×2+9=	66	4×10+91=
17	12×4+31=	42	6×6+91=	67	7×10+48=
18	2×2+54=	43	10×6+23=	68	3×12+60=
19	7×9+73=	44	4×12+4=	69	5×4+112=
20	3×12+28=	45	3×9+79=	70	5×8+8=
21	2×5+23=	46	11×3+62=	71	4×11+85=
22	11×7+34=	47	12×5+63=	72	11×9+31=
23	8×6+29=	48	5×10+81=	73	2×2+101=
24	12×12+0=	49	3×7+100=	74	9×5+32=
25	6×12+60=	50	10×10+38=	75	3×12+43=



F1

F2-乘法连加法-乘除在前-(有括号)

- 1

2x(4+8)=

26

7x(8+0)=

51

10x(9+3)=
- 2

7x(13+5)=

27

4x(10+1)=

52

11x(19+0)=
- 3

7x(0+6)=

28

13x(8+3)=

53

6x(5+3)=
- 4

10x(15+3)=

29

9x(10+5)=

54

12x(18+0)=
- 5

11x(9+4)=

30

9x(0+16)=

55

11x(19+0)=
- 6

5x(17+1)=

31

6x(18+0)=

56

9x(1+4)=
- 7

9x(18+0)=

32

3x(18+1)=

57

2x(16+1)=
- 8

11x(4+12)=

33

1x(19+0)=

58

2x(12+7)=
- 9

13x(16+0)=

34

6x(17+1)=

59

13x(11+3)=
- 10

6x(3+13)=

35

7x(14+2)=

60

9x(15+2)=
- 11

9x(16+2)=

36

4x(1+13)=

61

13x(9+4)=
- 12

5x(8+4)=

37

8x(16+3)=

62

13x(4+7)=
- 13

7x(8+8)=

38

9x(1+3)=

63

2x(14+2)=
- 14

8x(15+1)=

39

5x(4+13)=

64

8x(3+7)=
- 15

3x(8+4)=

40

10x(15+1)=

65

11x(17+0)=
- 16

7x(17+0)=

41

13x(3+9)=

66

8x(7+11)=
- 17

5x(0+5)=

42

3x(19+0)=

67

1x(9+6)=
- 18

3x(12+1)=

43

11x(0+7)=

68

12x(14+4)=
- 19

10x(7+5)=

44

12x(17+1)=

69

7x(7+1)=
- 20

10x(15+0)=

45

7x(11+5)=

70

7x(7+4)=
- 21

10x(0+17)=

46

5x(3+3)=

71

7x(9+9)=
- 22

4x(5+8)=

47

8x(13+2)=

72

11x(16+1)=
- 23

6x(16+3)=

48

3x(19+0)=

73

10x(1+13)=
- 24

11x(9+7)=

49

9x(13+4)=

74

11x(0+5)=
- 25

4x(15+2)=

50

12x(18+1)=

75

6x(17+2)=



F3-乘法连加法-加减在前-(无括号)

1	10+8×9=	26	90+8×3=	51	87+7×8=
2	7+11×9=	27	32+11×6=	52	10+11×12=
3	105+5×2=	28	19+7×4=	53	66+9×4=
4	60+8×5=	29	12+11×4=	54	15+3×9=
5	10+6×8=	30	39+4×12=	55	45+8×4=
6	1+9×10=	31	75+8×7=	56	33+11×2=
7	31+12×7=	32	25+4×2=	57	113+3×5=
8	30+9×12=	33	21+4×7=	58	23+9×6=
9	76+6×10=	34	79+12×2=	59	79+10×6=
10	22+9×8=	35	26+7×2=	60	31+6×12=
11	34+6×8=	36	51+8×11=	61	113+1×11=
12	26+12×8=	37	80+10×6=	62	0+12×8=
13	76+6×6=	38	101+7×3=	63	59+12×3=
14	88+5×10=	39	64+3×5=	64	16+8×11=
15	87+8×3=	40	103+2×10=	65	40+12×4=
16	23+7×6=	41	20+10×11=	66	9+11×12=
17	56+6×10=	42	84+2×5=	67	89+3×12=
18	47+10×7=	43	24+9×6=	68	92+5×4=
19	39+9×11=	44	7+4×2=	69	100+12×3=
20	20+12×9=	45	44+10×5=	70	90+8×6=
21	57+4×9=	46	106+3×7=	71	91+10×2=
22	82+2×10=	47	3+12×11=	72	44+4×11=
23	88+9×2=	48	73+2×9=	73	18+12×6=
24	5+9×5=	49	53+5×4=	74	19+4×12=
25	5+6×11=	50	15+7×11=	75	60+10×5=

F3-乘法连加法-加减在前-(无括号) - Answer

1	82	26	114	51	143
2	106	27	98	52	142
3	115	28	47	53	102
4	100	29	56	54	42
5	58	30	87	55	77
6	91	31	131	56	55
7	115	32	33	57	128
8	138	33	49	58	77
9	136	34	103	59	139
10	94	35	40	60	103
11	82	36	139	61	124
12	122	37	140	62	96
13	112	38	122	63	95
14	138	39	79	64	104
15	111	40	123	65	88
16	65	41	130	66	141
17	116	42	94	67	125
18	117	43	78	68	112
19	138	44	15	69	136
20	128	45	94	70	138
21	93	46	127	71	111
22	102	47	135	72	88
23	106	48	91	73	90
24	50	49	73	74	67
25	71	50	92	75	110

F1

F2

F3

F4

F5

F6

F7

F8

F9

F10

NAV

A

B

C

D

E

F4-乘法连加法-加减在前-(有括号)

1	(19+0)×2=	26	(12+7)×9=	51	(6+4)×8=
2	(9+6)×8=	27	(4+8)×4=	52	(12+1)×8=
3	(0+16)×7=	28	(15+4)×10=	53	(13+2)×5=
4	(17+2)×5=	29	(9+8)×4=	54	(15+2)×4=
5	(6+13)×13=	30	(19+0)×13=	55	(14+4)×12=
6	(8+11)×3=	31	(7+2)×6=	56	(8+10)×3=
7	(14+3)×12=	32	(18+1)×12=	57	(19+0)×6=
8	(3+10)×8=	33	(6+3)×10=	58	(13+6)×9=
9	(9+8)×4=	34	(2+13)×4=	59	(16+1)×12=
10	(5+2)×13=	35	(4+11)×9=	60	(13+0)×6=
11	(11+8)×2=	36	(3+15)×5=	61	(7+12)×8=
12	(3+6)×7=	37	(2+16)×12=	62	(14+5)×5=
13	(6+13)×11=	38	(13+6)×8=	63	(10+5)×8=
14	(1+14)×1=	39	(3+2)×12=	64	(6+6)×6=
15	(17+1)×7=	40	(18+1)×12=	65	(0+4)×11=
16	(15+1)×3=	41	(19+0)×2=	66	(16+2)×12=
17	(14+4)×8=	42	(3+9)×7=	67	(12+3)×11=
18	(16+3)×7=	43	(1+7)×3=	68	(14+3)×12=
19	(14+2)×8=	44	(1+0)×9=	69	(2+17)×1=
20	(4+8)×5=	45	(1+14)×7=	70	(9+8)×10=
21	(19+0)×6=	46	(6+12)×7=	71	(7+9)×9=
22	(13+4)×3=	47	(17+1)×10=	72	(11+6)×11=
23	(15+1)×5=	48	(18+1)×12=	73	(13+5)×5=
24	(17+1)×11=	49	(1+13)×8=	74	(16+0)×3=
25	(19+0)×9=	50	(10+2)×4=	75	(8+4)×9=

F5-乘法连减法-加减在前-(无括号)

1	85-7×9=	26	95-2×11=	51	118-12×10=
2	91-11×7=	27	122-12×12=	52	76-4×4=
3	80-4×12=	28	56-8×7=	53	67-2×3=
4	43-8×2=	29	71-2×12=	54	33-6×3=
5	24-2×4=	30	56-7×4=	55	108-11×10=
6	40-6×3=	31	90-7×11=	56	43-5×6=
7	36-1×1=	32	112-12×11=	57	48-3×10=
8	54-8×6=	33	68-4×8=	58	50-7×2=
9	81-12×2=	34	105-10×12=	59	108-12×10=
10	6-2×3=	35	70-12×4=	60	68-3×3=
11	76-8×9=	36	87-11×2=	61	98-11×8=
12	131-12×11=	37	95-7×12=	62	88-5×7=
13	63-5×12=	38	81-2×9=	63	96-4×3=
14	67-8×2=	39	65-8×5=	64	111-11×11=
15	102-12×9=	40	34-2×1=	65	68-6×10=
16	80-11×6=	41	100-11×10=	66	102-9×12=
17	17-7×2=	42	93-10×5=	67	42-7×6=
18	96-11×3=	43	83-6×6=	68	93-8×11=
19	99-12×8=	44	63-2×10=	69	40-5×3=
20	81-8×5=	45	102-10×11=	70	70-7×8=
21	96-12×7=	46	95-6×7=	71	46-5×9=
22	98-7×4=	47	45-3×3=	72	108-11×12=
23	88-10×7=	48	101-10×12=	73	47-11×2=
24	96-5×3=	49	106-12×11=	74	96-6×8=
25	99-8×12=	50	99-11×9=	75	69-5×6=

F6-乘法连减法-加减在前-(随机括号)

1	(14-12)×7=	26	44-3×11=	51	93-6×2=
2	78-5×12=	27	105-11×10=	52	(19-1)×10=
3	79-6×11=	28	92-9×10=	53	75-4×10=
4	(19-17)×7=	29	(1-0)×6=	54	98-9×10=
5	(12-0)×4=	30	98-5×1=	55	26-2×2=
6	48-7×5=	31	(15-4)×13=	56	61-12×3=
7	(14-5)×13=	32	(19-0)×1=	57	(18-8)×8=
8	(9-7)×11=	33	(17-5)×13=	58	50-12×2=
9	(8-0)×13=	34	99-12×5=	59	(4-3)×4=
10	87-12×7=	35	99-8×12=	60	(6-2)×5=
11	99-12×3=	36	(8-4)×9=	61	89-12×7=
12	(9-7)×4=	37	95-10×9=	62	(17-2)×4=
13	90-9×8=	38	(3-1)×9=	63	(6-3)×12=
14	100-11×12=	39	(10-2)×5=	64	(6-0)×13=
15	32-7×4=	40	(17-13)×5=	65	55-7×5=
16	(5-1)×7=	41	67-4×11=	66	98-7×12=
17	97-7×10=	42	(6-5)×9=	67	93-7×10=
18	(2-1)×10=	43	99-7×12=	68	70-7×8=
19	99-8×12=	44	(5-3)×3=	69	(7-4)×6=
20	43-11×3=	45	(16-13)×4=	70	109-10×11=
21	90-12×6=	46	(14-1)×5=	71	100-10×10=
22	97-12×8=	47	32-3×4=	72	(8-5)×13=
23	(9-5)×10=	48	96-6×6=	73	96-11×5=
24	75-5×6=	49	(10-6)×10=	74	(15-14)×8=
25	(9-3)×8=	50	36-6×5=	75	(11-7)×13=

F6-乘法连减法-加减在前-(随机括号) - Answer

1	14	26	11	51	81
2	18	27	-5	52	180
3	13	28	2	53	35
4	14	29	6	54	8
5	48	30	93	55	22
6	13	31	143	56	25
7	117	32	19	57	80
8	22	33	156	58	26
9	104	34	39	59	4
10	3	35	3	60	20
11	63	36	36	61	5
12	8	37	5	62	60
13	18	38	18	63	36
14	-32	39	40	64	78
15	4	40	20	65	20
16	28	41	23	66	14
17	27	42	9	67	23
18	10	43	15	68	14
19	3	44	6	69	18
20	10	45	12	70	-1
21	18	46	65	71	0
22	1	47	20	72	39
23	40	48	60	73	41
24	45	49	40	74	8
25	48	50	6	75	52

F1

F2

F3

F4

F5

F6

F7

F8

F9

F10

NAV

A

B

C

D

E

F7-乘法连加减-加减在前-(无括号)

- 1

14-3×3=
- 2

75-2×11=
- 3

0+12×12=
- 4

1+9×9=
- 5

71-4×11=
- 6

96-8×12=
- 7

98-7×12=
- 8

141-12×12=
- 9

86-8×3=
- 10

104-9×12=
- 11

10+11×9=
- 12

25-2×10=
- 13

100-10×10=
- 14

23+11×7=
- 15

116-11×12=
- 16

91-12×4=
- 17

35+2×12=
- 18

98-10×9=
- 19

80-4×2=
- 20

83-7×10=
- 21

92-7×2=
- 22

22-1×6=
- 23

109+2×3=
- 24

16+12×5=
- 25

109+2×5=
- 26

20+8×11=
- 27

34+2×5=
- 28

96-10×9=
- 29

58+9×9=
- 30

99-11×9=
- 31

94-12×6=
- 32

111+3×2=
- 33

8+6×11=
- 34

90-7×12=
- 35

92-10×9=
- 36

106-12×10=
- 37

87-10×6=
- 38

89-12×7=
- 39

24+11×6=
- 40

24-8×2=
- 41

86-10×4=
- 42

20+10×12=
- 43

74+4×5=
- 44

41-3×4=
- 45

37-2×10=
- 46

68+6×4=
- 47

52-3×6=
- 48

105-12×10=
- 49

37-5×3=
- 50

93+6×6=
- 51

113+12×2=
- 52

14+8×8=
- 53

15+4×3=
- 54

40-6×4=
- 55

116-10×12=
- 56

48-5×8=
- 57

123-12×12=
- 58

72-12×4=
- 59

3+2×12=
- 60

83+9×4=
- 61

24+5×10=
- 62

103+2×7=
- 63

53+10×9=
- 64

8+10×11=
- 65

14+8×11=
- 66

15+6×11=
- 67

97-9×7=
- 68

26+5×10=
- 69

24-4×3=
- 70

65-5×8=
- 71

11+9×10=
- 72

86-9×1=
- 73

10+10×12=
- 74

64+2×11=
- 75

33+10×9=

F8-乘法连加減-加減在前-(随机括号)

1	(4-0)×9=	26	24+8×8=	51	(14+2)×9=
2	(12-10)×6=	27	38+4×5=	52	76-11×6=
3	(16+3)×10=	28	7+10×12=	53	(15+4)×4=
4	17+8×8=	29	(11-4)×3=	54	70-6×6=
5	95+9×2=	30	(10-0)×7=	55	13+12×6=
6	21+12×9=	31	93-4×10=	56	12+7×11=
7	(6+6)×7=	32	96-7×11=	57	(4+7)×8=
8	26+5×12=	33	40+4×11=	58	23+9×8=
9	(12+2)×4=	34	53+12×6=	59	(10+0)×2=
10	79-6×12=	35	(5+6)×13=	60	(5-3)×13=
11	103+7×5=	36	(7-3)×2=	61	34+2×4=
12	79+5×12=	37	(6+5)×3=	62	(14+2)×3=
13	115-12×12=	38	22+8×5=	63	124+7×2=
14	(2-0)×9=	39	83+2×2=	64	(11+7)×2=
15	61-4×2=	40	(8-5)×9=	65	(2+1)×13=
16	(2-1)×3=	41	(11+7)×10=	66	(15-2)×6=
17	(11-2)×2=	42	(3-0)×11=	67	87-5×10=
18	26-7×3=	43	34+11×4=	68	(1-0)×7=
19	(18+1)×7=	44	(19-8)×3=	69	51-3×12=
20	(14+1)×5=	45	(3-0)×4=	70	78-2×10=
21	(6+1)×10=	46	69+9×8=	71	97-9×7=
22	(18+0)×10=	47	42+7×2=	72	(0+18)×11=
23	96-7×12=	48	19-9×2=	73	(2-1)×11=
24	(10-7)×6=	49	(12+2)×9=	74	95-2×3=
25	(18+1)×2=	50	(9-1)×13=	75	28+11×5=



F9-乘法连加減-随机顺序-(随机括号)

1	33-2×3=	26	6×11+27=	51	(2+15)×2=
2	(11-9)×6=	27	60-3×6=	52	(16+0)×10=
3	69-4×8=	28	(4-2)×3=	53	5×11+47=
4	(2-1)×2=	29	11×7+21=	54	9×(19-10)=
5	9×10-49=	30	(13-4)×6=	55	69-5×4=
6	11×(7-2)=	31	(12+4)×13=	56	4×(16-7)=
7	12×3-33=	32	(4-1)×6=	57	10×(7-2)=
8	(15-14)×3=	33	(4-3)×11=	58	(15-6)×3=
9	69+12×3=	34	9×(1+6)=	59	125+3×6=
10	(15+2)×7=	35	10×5-1=	60	(12+4)×5=
11	4×11+16=	36	71-4×3=	61	18+8×11=
12	12×(17-6)=	37	(16+0)×5=	62	(16+1)×6=
13	10×(10+9)=	38	(10-5)×4=	63	83+6×3=
14	42-1×9=	39	(17-3)×9=	64	31+3×12=
15	6×(0-0)=	40	10×4+70=	65	8×9+16=
16	4+9×11=	41	10×10+24=	66	(11-8)×1=
17	82-8×4=	42	(18-10)×10=	67	55-5×5=
18	106+12×3=	43	2×(18-13)=	68	(3-1)×7=
19	11×(16+3)=	44	(11-0)×12=	69	2×11-12=
20	8×4+1=	45	68-9×3=	70	59+7×3=
21	2×10+75=	46	10×10+13=	71	19+11×11=
22	(17+2)×12=	47	34+9×7=	72	87+2×7=
23	4×9+100=	48	(6+4)×5=	73	6×(8+0)=
24	(1-0)×7=	49	5×(17+1)=	74	12×10-39=
25	6×5-26=	50	11×(3-2)=	75	61-9×3=



F1

F2

F3

F4

F5

F6

F7

F8

F9

F10

NAV

A

B

C

D

E



- | | | | | | |
|----|-----|----|-----|----|-----|
| 1 | 10 | 26 | 95 | 51 | 122 |
| 2 | 138 | 27 | 14 | 52 | 122 |
| 3 | 4 | 28 | 50 | 53 | 66 |
| 4 | 21 | 29 | 7 | 54 | 12 |
| 5 | 4 | 30 | 3 | 55 | 34 |
| 6 | 99 | 31 | 32 | 56 | 140 |
| 7 | 126 | 32 | 7 | 57 | 156 |
| 8 | 152 | 33 | 20 | 58 | 24 |
| 9 | 52 | 34 | 5 | 59 | 9 |
| 10 | 6 | 35 | 4 | 60 | 144 |
| 11 | 120 | 36 | 12 | 61 | 3 |
| 12 | 3 | 37 | 5 | 62 | 20 |
| 13 | 0 | 38 | 12 | 63 | 74 |
| 14 | 105 | 39 | 69 | 64 | 89 |
| 15 | 78 | 40 | 187 | 65 | 8 |
| 16 | 57 | 41 | 11 | 66 | 5 |
| 17 | 3 | 42 | 136 | 67 | 141 |
| 18 | 27 | 43 | 133 | 68 | 204 |
| 19 | 8 | 44 | 3 | 69 | 8 |
| 20 | 110 | 45 | 40 | 70 | 10 |
| 21 | 9 | 46 | 2 | 71 | 144 |
| 22 | 108 | 47 | 84 | 72 | 1 |
| 23 | 2 | 48 | 40 | 73 | 121 |
| 24 | 2 | 49 | 37 | 74 | 26 |
| 25 | 7 | 50 | 195 | 75 | 32 |



附录 A Miscellaneous

$2 \times 2 = 4$							
二二得四							
$2 \times 3 = 6$	$3 \times 3 = 9$						
二三得六	三三得九						
$2 \times 4 = 8$	$3 \times 4 = 12$	$4 \times 4 = 16$					
二四得八	三四十二	四四十六					
$2 \times 5 = 10$	$3 \times 5 = 15$	$4 \times 5 = 20$	$5 \times 5 = 25$				
二五一十	三五十五	四五二十	五五二十五				
$2 \times 6 = 12$	$3 \times 6 = 18$	$4 \times 6 = 24$	$5 \times 6 = 30$	$6 \times 6 = 36$			
二六十二	三六十八	四六二十四	五六三十	六六三十六			
$2 \times 7 = 14$	$3 \times 7 = 21$	$4 \times 7 = 28$	$5 \times 7 = 35$	$6 \times 7 = 42$	$7 \times 7 = 49$		
二七十四	三七二十一	四七二十八	五七三十五	六七四十二	七七四十九		
$2 \times 8 = 16$	$3 \times 8 = 24$	$4 \times 8 = 32$	$5 \times 8 = 40$	$6 \times 8 = 48$	$7 \times 8 = 56$	$8 \times 8 = 64$	
二八十六	三八二十四	四八三十二	五八四十	六八四十八	七八五十六	八八六十四	
$2 \times 9 = 18$	$3 \times 9 = 27$	$4 \times 9 = 36$	$5 \times 9 = 45$	$6 \times 9 = 54$	$7 \times 9 = 63$	$8 \times 9 = 72$	$9 \times 9 = 81$
二九十八	三九二十七	四九三十六	五九四十五	六九五十四	七九六十三	八九七十二	九九八十一

NAV

A

B

C

D

E

F

Contents

第一章	Addition 加 & Subtraction 减	4
A1	addition that does not carry over within 100	5
A2	subtraction that does not borrow within 300	6
A3	addition that carries over within 500	7
A4	subtraction that borrows within 1000	8
A5	mixture of 1 and 2 within 300	9
A6	mixture of 3 and 4 within 1000	10
A7	mixture of 3 and 4 within 1000	11
A8	any mixture of the above within 300 (fill in the blanks/sums)	12
第二章	Multiplication 乘 & Division 除	13
B1	multiplication (sums)	14
B2	division (sums)	15
B3	multiplication & division (sums)	16
B4	Multiplication with Addition and Subtraction within maxval	17
B5	Division with Addition and Subtraction within maxval	18
B6a	Addition/Subtraction/Multiplication/Division (sums)	19
B6b	Addition/Subtraction/Multiplication/Division (fill in the blanks)	20
B7	Addition and Subtraction within maxval	21
第三章	Multiplication 乘 & Division 除 (Advanced)	22
C1	times table up to 9 (sums)	23
C2	times table up to 12 (sums)	24
C3	times table up to 9 (fill in the blanks)	25
C4	times table up to 12 (fill in the blanks)	26
C5	times table (Chinese version)	27
C6	division with remainder (up to 9 times table)	28
C7	division with remainder (up to 12 times table)	29

C8 multiplication after multiplication ($\text{maxval} \times \text{maxval} \times \text{maxval}$)	30
C9 division after division ($\text{maxval} \div \text{maxval} \div \text{maxval}$)	31
C10 one multiplication and one division	32
C11 (multiplication after multiplication) OR (division after division)	33
C12 any mixture of multiplication and division	34
第四章 Addition 加 & Subtraction 减 (with Number Bounds 凑整)	35
D1 Addition with number bounds up to maxval	36
D2 Addition/subtraction with number bounds up to maxval	37
D3 Addition with random number bounds up to maxval	38
D4 Addition/subtraction with random number bounds up to maxval	39
D5 Grouping the last two terms (number bounds) up to maxval	40
D6 Random number bounds up to maxval	41
D7 Random addition up to maxval	42
D8 Random subtraction up to maxval	43
D9 Random addition and subtraction up to maxval	44
第五章 Addition 加 & Subtraction 减 (with Brackets 括号)	45
E1 Random addition and subtraction (no brackets) up to maxval	46
E2 Subtraction with brackets up to maxval	47
E3 Random addition and subtraction with brackets up to maxval	48
第六章 BIDMAS 四则运算	49
F1 Multiplication then addition (no brackets)	50
F2 Multiplication then addition (with brackets)	51
F3 Addition then multiplication (no brackets)	52
F4 Addition then multiplication (with brackets)	53
F5 Subtraction then multiplication (no brackets)	54
F6 Subtraction then multiplication (random brackets)	55
F7 Addition/Subtraction then multiplication (no brackets)	56
F8 Addition/Subtraction then multiplication (random brackets)	57
F9 Addition/Subtraction and multiplication (random brackets, random position)	58
F10 BIDMAS	59
附录 A Miscellaneous	60
APP1 九九乘法口诀表	61